

# Chapter 2

## Application Layer

### A note on the use of these ppt slides:

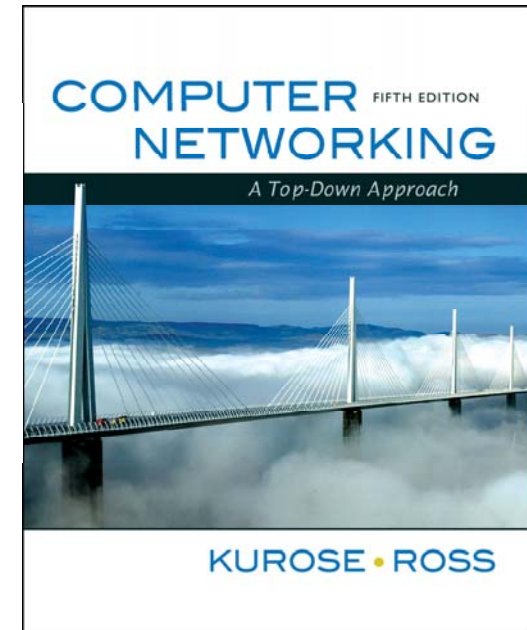
We're making these slides freely available to all (faculty, students, readers). They're in PowerPoint form so you can add, modify, and delete slides (including this one) and slide content to suit your needs. They obviously represent a *lot* of work on our part. In return for use, we only ask the following:

- If you use these slides (e.g., in a class) in substantially unaltered form, that you mention their source (after all, we'd like people to use our book!)
- If you post any slides in substantially unaltered form on a www site, that you note that they are adapted from (or perhaps identical to) our slides, and note our copyright of this material.

Thanks and enjoy! JFK/KWR

All material copyright 1996-2009

J.F Kurose and K.W. Ross, All Rights Reserved



*Computer Networking:  
A Top Down Approach,  
5<sup>th</sup> edition.*

*Jim Kurose, Keith Ross  
Addison-Wesley, April  
2009.*

# Chapter 2: Application layer

- ❑ 2.1 Principles of network applications
- ❑ 2.2 Web and HTTP
- ❑ 2.3 FTP
- ❑ 2.4 Electronic Mail
  - ❖ SMTP, POP3, IMAP
- ❑ 2.5 DNS
- ❑ 2.6 P2P applications
- ❑ 2.7 Socket programming with TCP
- ❑ 2.8 Socket programming with UDP

# Chapter 2: Application Layer

## Our goals:

- ❑ conceptual, implementation aspects of network application protocols
  - ❖ transport-layer service models
  - ❖ client-server paradigm
  - ❖ peer-to-peer paradigm
- ❑ learn about protocols by examining popular application-level protocols
  - ❖ HTTP
  - ❖ FTP
  - ❖ SMTP / POP3 / IMAP
  - ❖ DNS
- ❑ programming network applications
  - ❖ socket API

# Some network apps

- ☐ e-mail
- ☐ web
- ☐ instant messaging
- ☐ remote login
- ☐ P2P file sharing
- ☐ multi-user network games
- ☐ streaming stored video clips
- ☐ voice over IP
- ☐ real-time video conferencing
- ☐ grid computing
- ☐
- ☐
- ☐

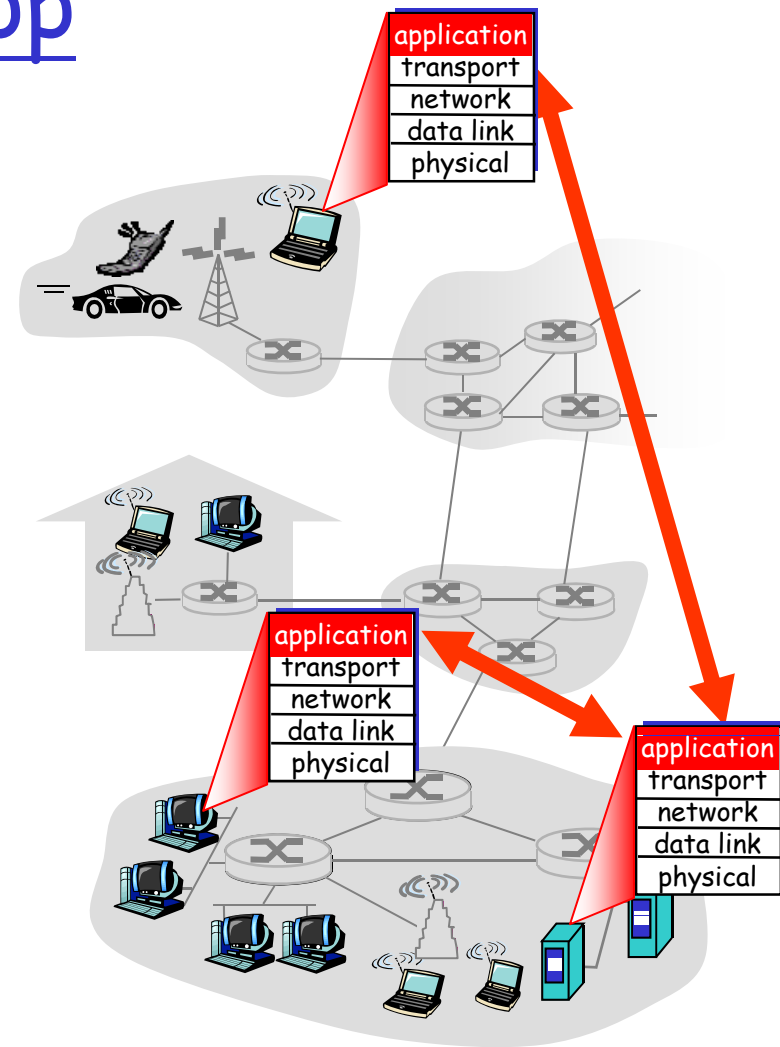
# Creating a network app

write programs that

- ❖ run on (different) *end systems*
- ❖ communicate over network
- ❖ e.g., web server software communicates with browser software

No need to write software for network-core devices

- ❖ Network-core devices do not run user applications
- ❖ applications on end systems allows for rapid app development, propagation



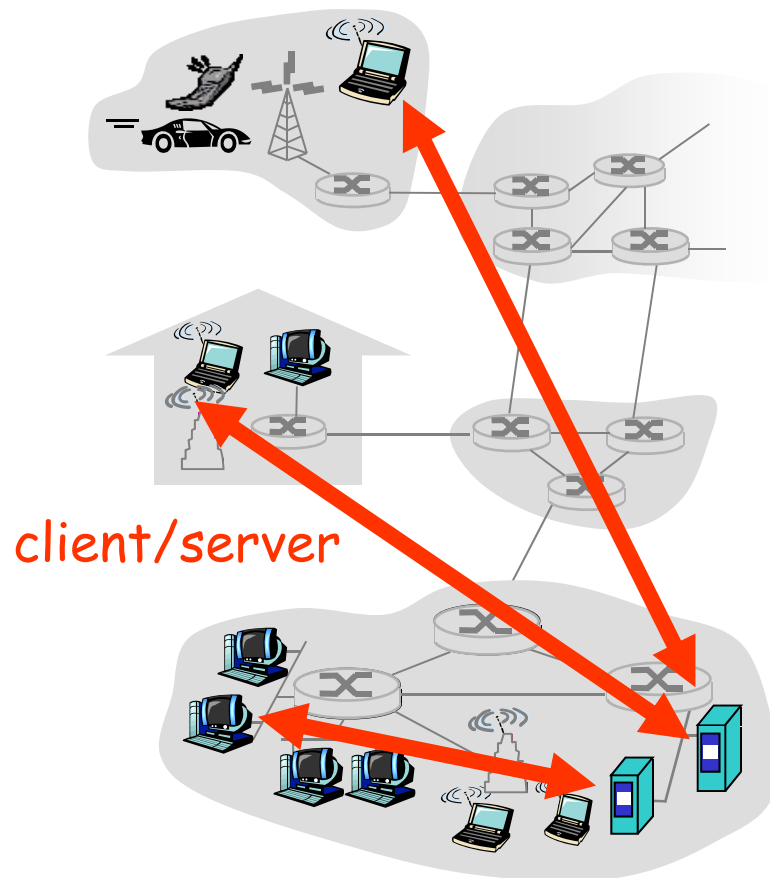
# Chapter 2: Application layer

- ❑ 2.1 Principles of network applications
- ❑ 2.2 Web and HTTP
- ❑ 2.3 FTP
- ❑ 2.4 Electronic Mail
  - ❖ SMTP, POP3, IMAP
- ❑ 2.5 DNS
- ❑ 2.6 P2P applications
- ❑ 2.7 Socket programming with TCP
- ❑ 2.8 Socket programming with UDP
- ❑ 2.9 Building a Web server

# Application architectures

- ❑ Client-server
- ❑ Peer-to-peer (P2P)
- ❑ Hybrid of client-server and P2P

# Client-server architecture



## server:

- ❖ always-on host
- ❖ permanent IP address
- ❖ server farms for scaling

## clients:

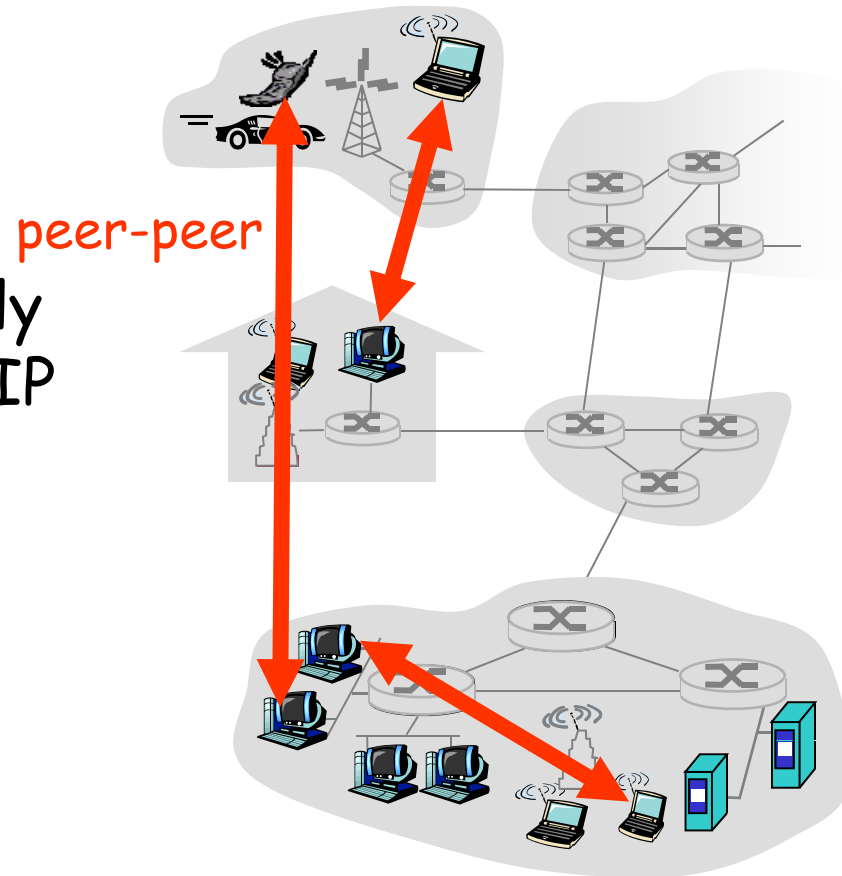
- ❖ communicate with server
- ❖ may be intermittently connected
- ❖ may have dynamic IP addresses
- ❖ do not communicate directly with each other



# Pure P2P architecture

- ❑ *no* always-on server
- ❑ arbitrary end systems directly communicate
- ❑ peers are intermittently connected and change IP addresses

Highly scalable but  
difficult to manage



# Hybrid of client-server and P2P

## Skype

- ❖ voice-over-IP P2P application
- ❖ centralized server: finding address of remote party:
- ❖ client-client connection: direct (not through server)

## Instant messaging

- ❖ chatting between two users is P2P
- ❖ centralized service: client presence detection/location
  - user registers its IP address with central server when it comes online
  - user contacts central server to find IP addresses of buddies

# Processes communicating

**Process:** program running within a host.

- within same host, two processes communicate using **inter-process communication** (defined by OS).
- processes in different hosts communicate by exchanging **messages**

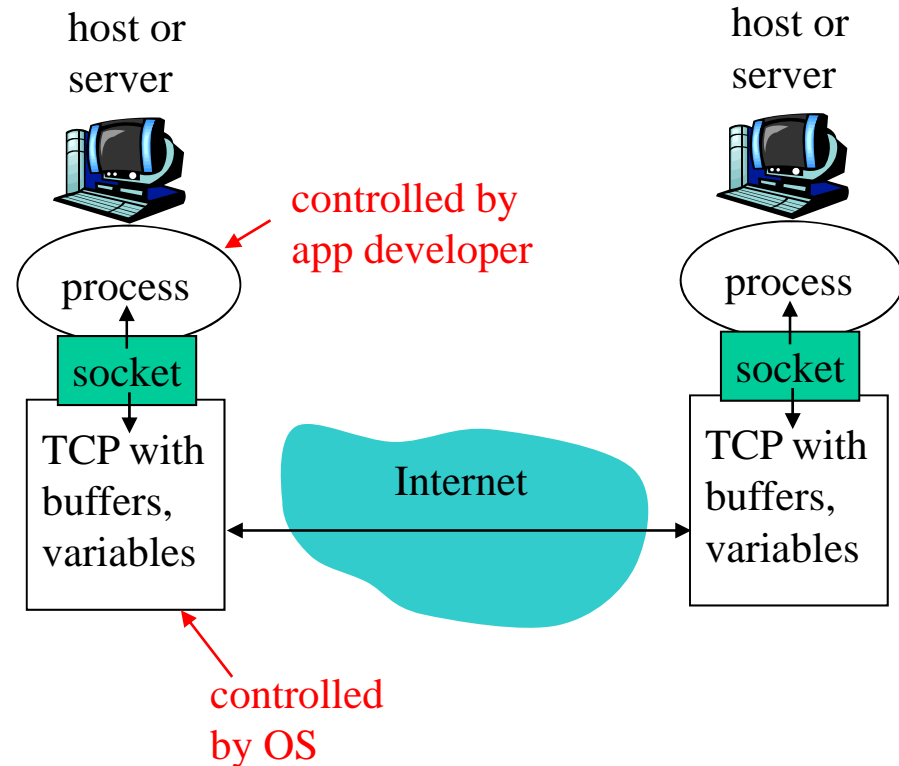
**Client process:** process that initiates communication

**Server process:** process that waits to be contacted

- Note: applications with P2P architectures have client processes & server processes

# Sockets

- ❑ process sends/receives messages to/from its **socket**
- ❑ socket analogous to door
  - ❖ sending process shoves message out door
  - ❖ sending process relies on transport infrastructure on other side of door which brings message to socket at receiving process



- ❑ API: (1) choice of transport protocol; (2) ability to fix a few parameters (lots more on this later)

# Addressing processes

- ❑ to receive messages, process must have *identifier*
- ❑ host device has unique 32-bit IP address
- ❑ Q: does IP address of host suffice for identifying the process?

# Addressing processes

- ❑ to receive messages, process must have *identifier*
- ❑ host device has unique 32-bit IP address
- ❑ Q: does IP address of host on which process runs suffice for identifying the process?
  - ❖ A: No, many processes can be running on same host
- ❑ *identifier* includes both IP address and port numbers associated with process on host.
- ❑ Example port numbers:
  - ❖ HTTP server: 80
  - ❖ Mail server: 25
- ❑ to send HTTP message to gaia.cs.umass.edu web server:
  - ❖ IP address: 128.119.245.12
  - ❖ Port number: 80
- ❑ more shortly...

# App-layer protocol defines

- ❑ Types of messages exchanged,
  - ❖ e.g., request, response
- ❑ Message syntax:
  - ❖ what fields in messages & how fields are delineated
- ❑ Message semantics
  - ❖ meaning of information in fields
- ❑ Rules for when and how processes send & respond to messages

## Public-domain protocols:

- ❑ defined in RFCs
- ❑ allows for interoperability
- ❑ e.g., HTTP, SMTP

## Proprietary protocols:

- ❑ e.g., Skype

# What transport service does an app need?

## Data loss

- ❑ some apps (e.g., audio) can tolerate some loss
- ❑ other apps (e.g., file transfer, telnet) require 100% reliable data transfer

## Timing

- ❑ some apps (e.g., Internet telephony, interactive games) require low delay to be "effective"

## Throughput

- ❑ some apps (e.g., multimedia) require minimum amount of throughput to be "effective"
- ❑ other apps ("elastic apps") make use of whatever throughput they get

## Security

- ❑ Encryption, data integrity, ...



## Transport service requirements of common apps

Application	Data loss	Throughput	Time Sensitive
file transfer	no loss	elastic	no
e-mail	no loss	elastic	no
Web documents	no loss	elastic	no
real-time audio/video	loss-tolerant	audio: 5kbps-1Mbps video: 10kbps-5Mbps	yes, 100's msec
stored audio/video	loss-tolerant	same as above	yes, few secs
interactive games	loss-tolerant	few kbps up	yes, 100's msec
instant messaging	no loss	elastic	yes and no

# Internet transport protocols services

## TCP service:

- ❑ *connection-oriented*: setup required between client and server processes
- ❑ *reliable transport* between sending and receiving process
- ❑ *flow control*: sender won't overwhelm receiver
- ❑ *congestion control*: throttle sender when network overloaded
- ❑ *does not provide*: timing, minimum throughput guarantees, security

## UDP service:

- ❑ unreliable data transfer between sending and receiving process
- ❑ does not provide: connection setup, reliability, flow control, congestion control, timing, throughput guarantee, or security

Q: why bother? Why is there a UDP?

## Internet apps: application, transport protocols

<b>Application</b>	<b>Application layer protocol</b>	<b>Underlying transport protocol</b>
e-mail	SMTP [RFC 2821]	TCP
remote terminal access	Telnet [RFC 854]	TCP
Web	HTTP [RFC 2616]	TCP
file transfer	FTP [RFC 959]	TCP
streaming multimedia	HTTP (eg Youtube), RTP [RFC 1889]	TCP or UDP
Internet telephony	SIP, RTP, proprietary (e.g., Skype)	typically UDP

# Chapter 2: Application layer

- ❑ 2.1 Principles of network applications
  - ❖ app architectures
  - ❖ app requirements
- ❑ 2.2 Web and HTTP
- ❑ 2.4 Electronic Mail
  - ❖ SMTP, POP3, IMAP
- ❑ 2.5 DNS
- ❑ 2.6 P2P applications
- ❑ 2.7 Socket programming with TCP
- ❑ 2.8 Socket programming with UDP

# Web and HTTP

## First some jargon

- ❑ Web page consists of objects
- ❑ Object can be HTML file, JPEG image, Java applet, audio file,...
- ❑ Web page consists of base HTML-file which includes several referenced objects
- ❑ Each object is addressable by a URL
- ❑ Example URL:

`www.someschool.edu/someDept/pic.gif`

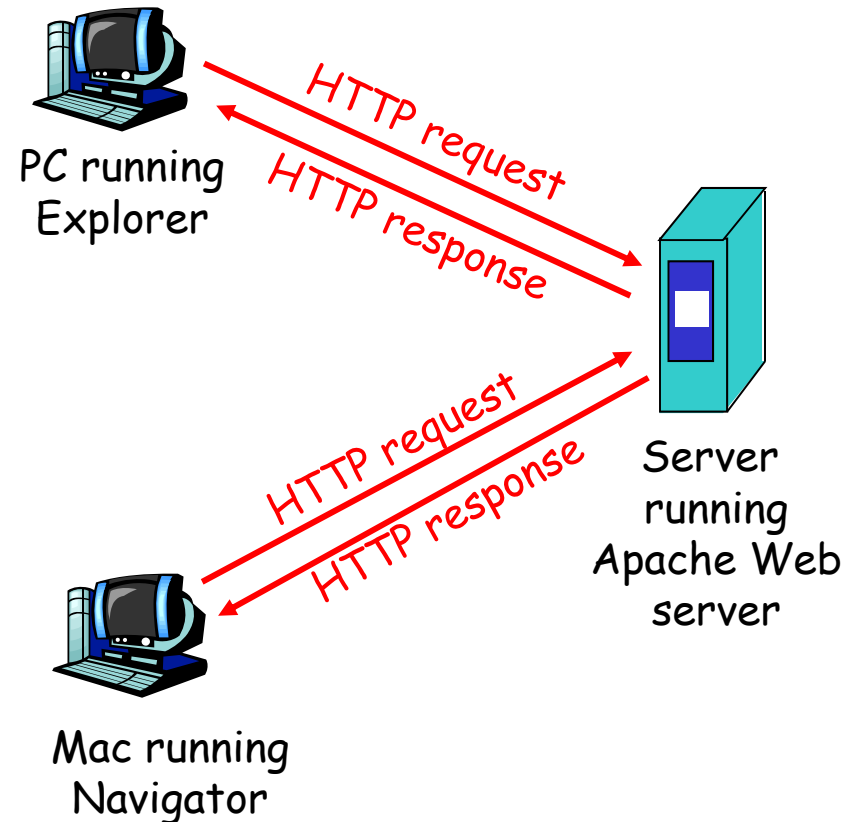
host name

path name

# HTTP overview

## HTTP: hypertext transfer protocol

- ❑ Web's application layer protocol
- ❑ client/server model
  - ❖ *client*: browser that requests, receives, "displays" Web objects
  - ❖ *server*: Web server sends objects in response to requests



# HTTP overview (continued)

## Uses TCP:

- ❑ client initiates TCP connection (creates socket) to server, port 80
- ❑ server accepts TCP connection from client
- ❑ HTTP messages (application-layer protocol messages) exchanged between browser (HTTP client) and Web server (HTTP server)
- ❑ TCP connection closed

## HTTP is "stateless"

- ❑ server maintains no information about past client requests

### Protocols that maintain "state" are complex! aside

- ❑ past history (state) must be maintained
- ❑ if server/client crashes, their views of "state" may be inconsistent, must be reconciled

# HTTP connections

## Nonpersistent HTTP

- ❑ At most one object is sent over a TCP connection.

## Persistent HTTP

- ❑ Multiple objects can be sent over single TCP connection between client and server.

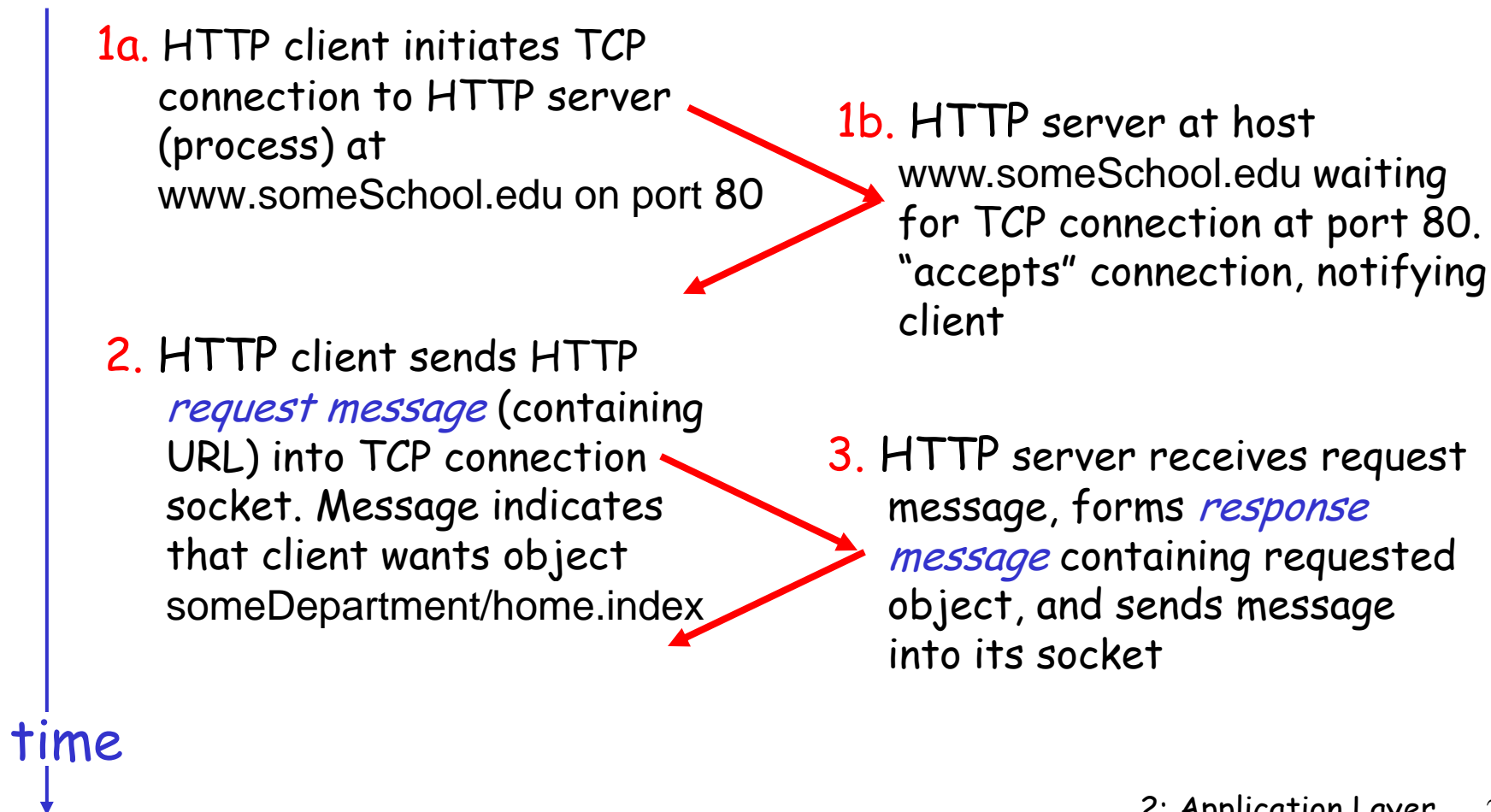


# Nonpersistent HTTP

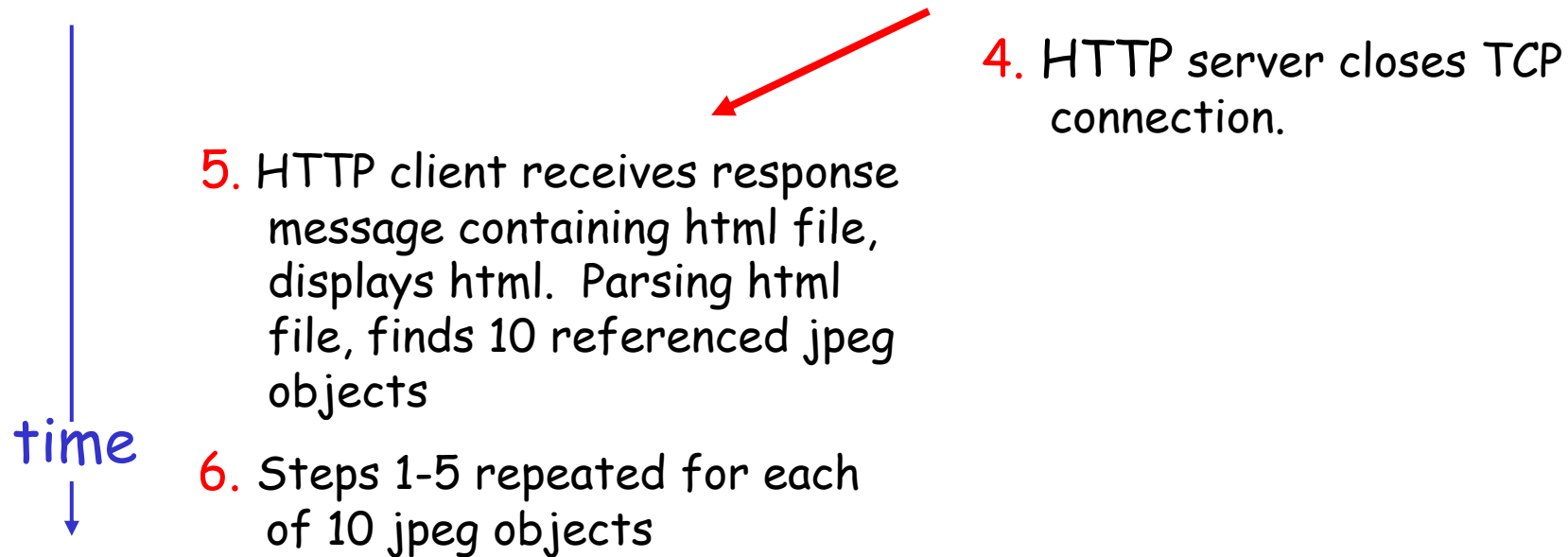
Suppose user enters URL

`www.someSchool.edu/someDepartment/home.index`

(contains text,  
references to 10  
jpeg images)



# Nonpersistent HTTP (cont.)



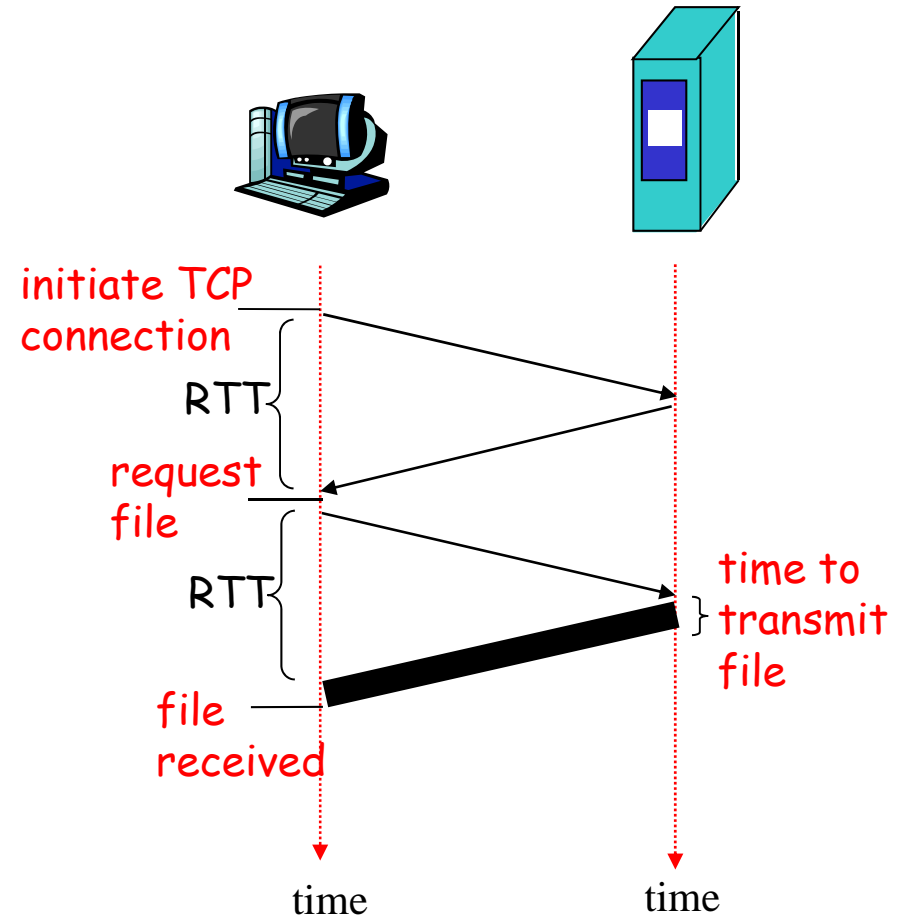
# Non-Persistent HTTP: Response time

**Definition of RTT:** time for a small packet to travel from client to server and back.

## Response time:

- ❑ one RTT to initiate TCP connection
- ❑ one RTT for HTTP request and first few bytes of HTTP response to return
- ❑ file transmission time

**total =  $2RTT + \text{transmit time}$**



# Persistent HTTP

## Nonpersistent HTTP issues:

- ❑ requires 2 RTTs per object
- ❑ OS overhead for *each* TCP connection
- ❑ browsers often open parallel TCP connections to fetch referenced objects

## Persistent HTTP

- ❑ server leaves connection open after sending response
- ❑ subsequent HTTP messages between same client/server sent over open connection
- ❑ client sends requests as soon as it encounters a referenced object
- ❑ as little as one RTT for all the referenced objects

# HTTP request message

- two types of HTTP messages: *request, response*
- **HTTP request message:**
  - ❖ ASCII (human-readable format)

request line  
(GET, POST,  
HEAD commands)

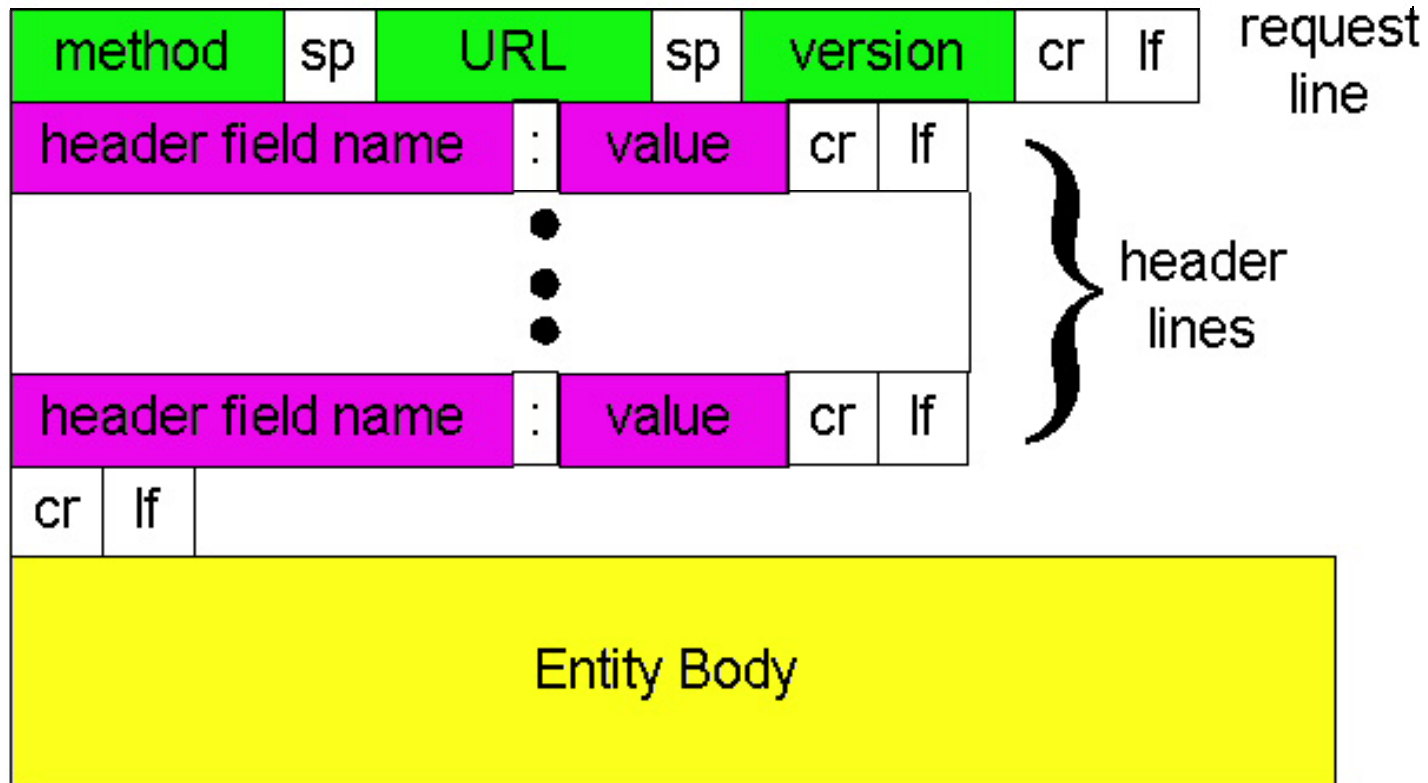
header  
lines

```
GET /somedir/page.html HTTP/1.1
Host: www.someschool.edu
User-agent: Mozilla/4.0
Connection: close
Accept-language: fr
```

Carriage return,  
line feed  
indicates end  
of message

(extra carriage return, line feed)

# HTTP request message: general format



# Uploading form input

## Post method:

- ❑ Web page often includes form input
- ❑ Input is uploaded to server in entity body

## URL method:

- ❑ Uses GET method
- ❑ Input is uploaded in URL field of request line:

`www.somesite.com/animalsearch?monkeys&banana`

# Method types

## HTTP/1.0

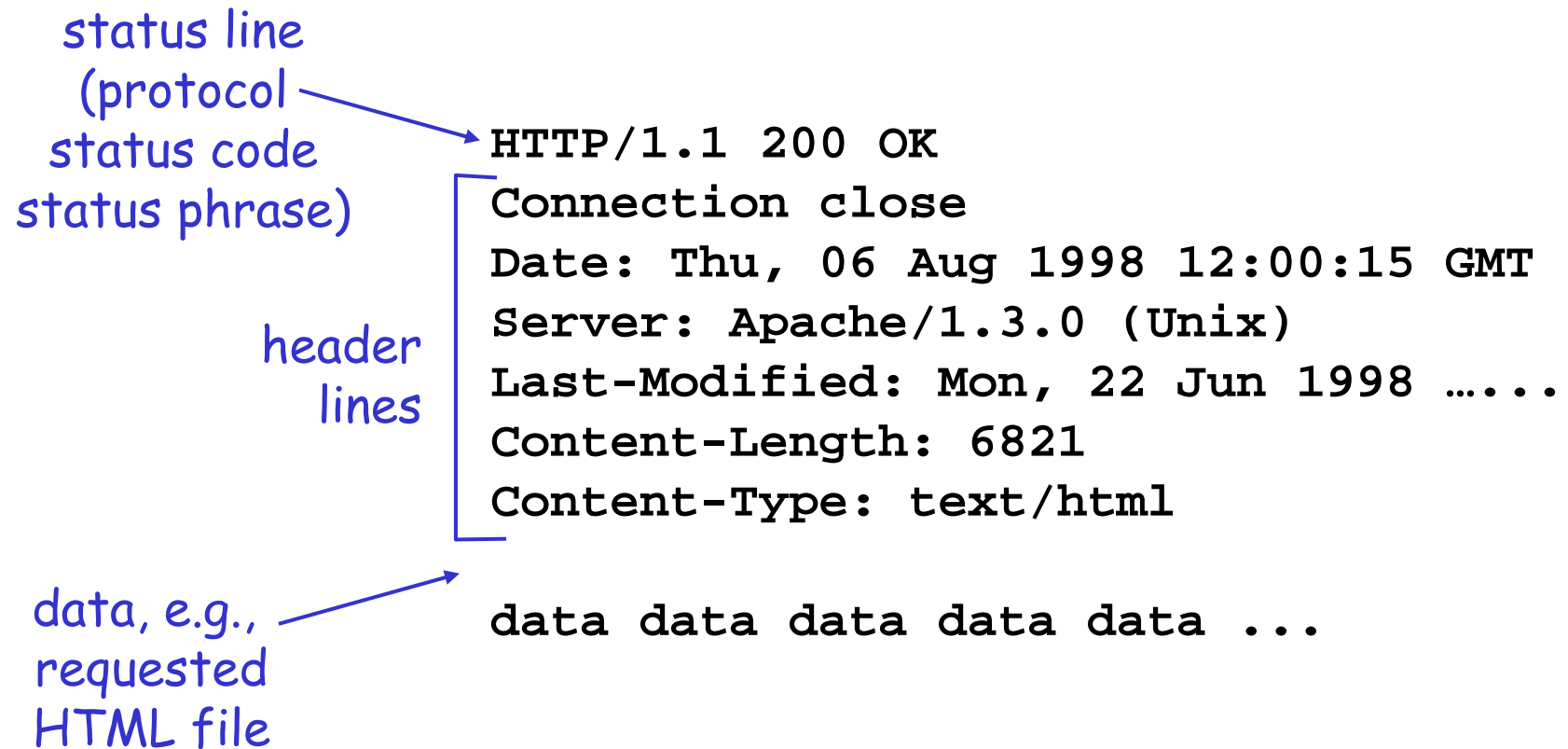
- ❑ GET
- ❑ POST
- ❑ HEAD
  - ❖ asks server to leave requested object out of response

## HTTP/1.1

- ❑ GET, POST, HEAD
- ❑ PUT
  - ❖ uploads file in entity body to path specified in URL field
- ❑ DELETE
  - ❖ deletes file specified in the URL field



# HTTP response message



# HTTP response status codes

In first line in server->client response message.

A few sample codes:

## **200 OK**

- ❖ request succeeded, requested object later in this message

## **301 Moved Permanently**

- ❖ requested object moved, new location specified later in this message (Location:)

## **400 Bad Request**

- ❖ request message not understood by server

## **404 Not Found**

- ❖ requested document not found on this server

## **505 HTTP Version Not Supported**

# Trying out HTTP (client side) for yourself

1. Telnet to your favorite Web server:

```
telnet cis.poly.edu 80
```

Opens TCP connection to port 80  
(default HTTP server port) at cis.poly.edu.  
Anything typed in sent  
to port 80 at cis.poly.edu

2. Type in a GET HTTP request:

```
GET /~ross/ HTTP/1.1  
Host: cis.poly.edu
```

By typing this in (hit carriage  
return twice), you send  
this minimal (but complete)  
GET request to HTTP server

3. Look at response message sent by HTTP server!

# User-server state: cookies

Many major Web sites  
use cookies

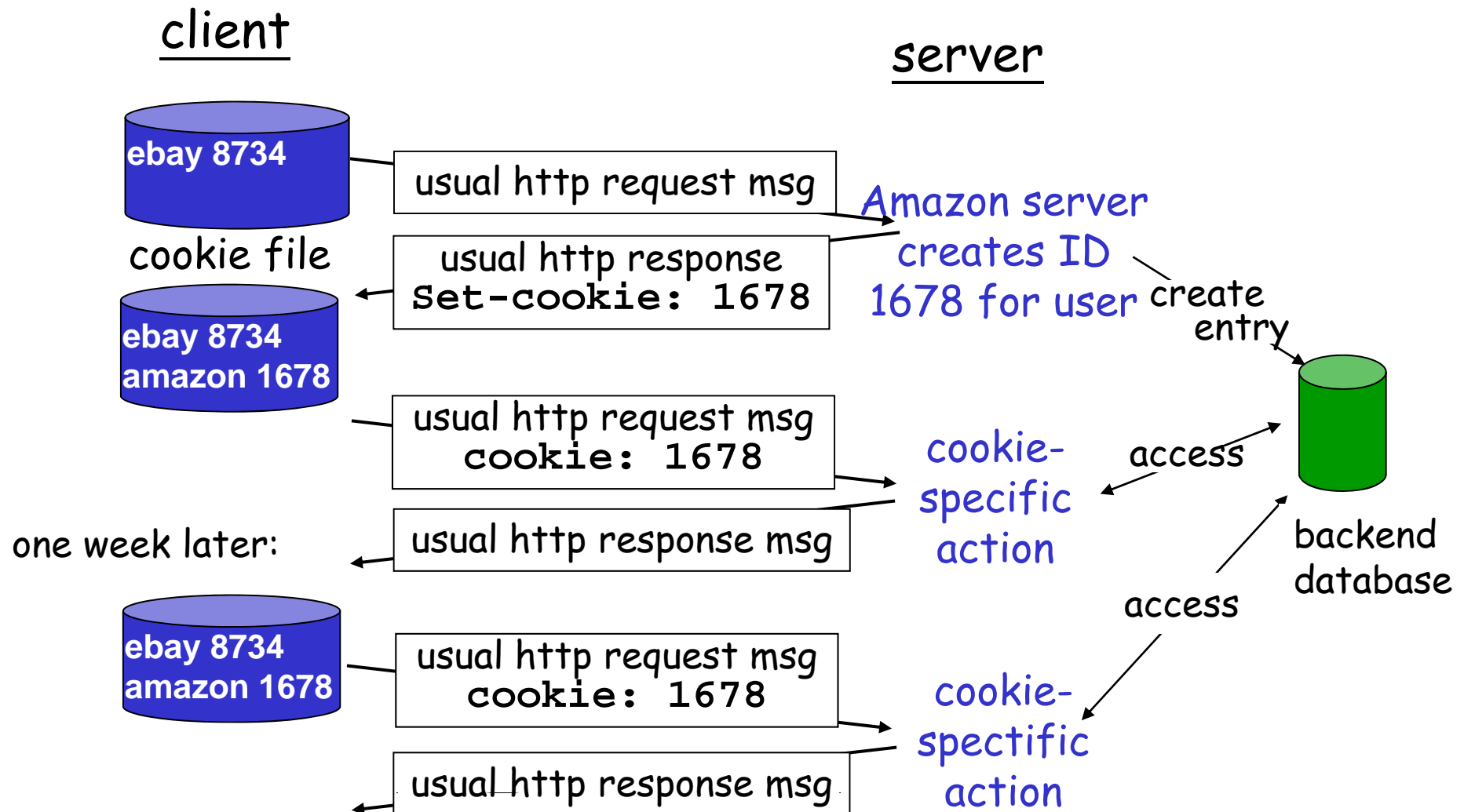
## Four components:

- 1) cookie header line of  
HTTP *response* message
- 2) cookie header line in  
HTTP *request* message
- 3) cookie file kept on  
user's host, managed by  
user's browser
- 4) back-end database at  
Web site

## Example:

- ❑ Susan always access  
Internet always from PC
- ❑ visits specific e-  
commerce site for first  
time
- ❑ when initial HTTP  
requests arrives at site,  
site creates:
  - ❖ unique ID
  - ❖ entry in backend  
database for ID

# Cookies: keeping "state" (cont.)



# Cookies (continued)

## What cookies can bring:

- ❑ authorization
- ❑ shopping carts
- ❑ recommendations
- ❑ user session state  
(Web e-mail)

## How to keep "state":

- ❑ protocol endpoints: maintain state at sender/receiver over multiple transactions
- ❑ cookies: http messages carry state

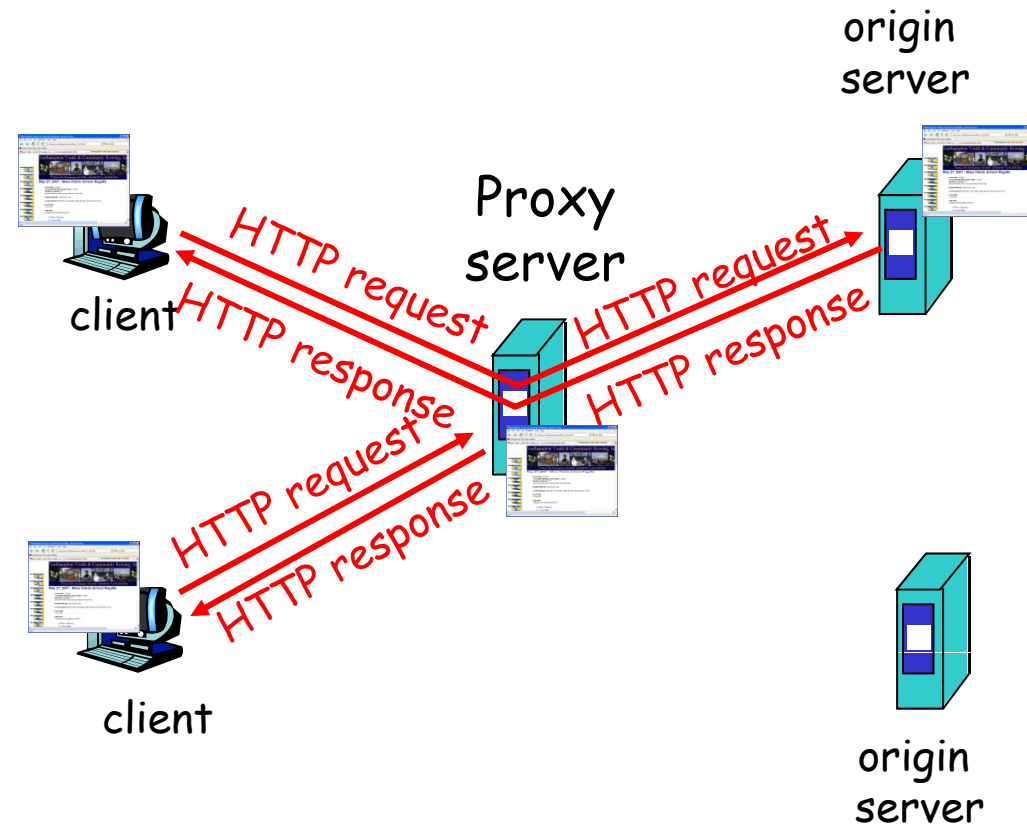
## Cookies and privacy: aside

- ❑ cookies permit sites to learn a lot about you
- ❑ you may supply name and e-mail to sites

# Web caches (proxy server)

**Goal:** satisfy client request without involving origin server

- ❑ user sets browser:  
Web accesses via cache
- ❑ browser sends all HTTP requests to cache
  - ❖ object in cache: cache returns object
  - ❖ else cache requests object from origin server, then returns object to client



# More about Web caching

- ❑ cache acts as both client and server
- ❑ typically cache is installed by ISP (university, company, residential ISP)

## Why Web caching?

- ❑ reduce response time for client request
- ❑ reduce traffic on an institution's access link.
- ❑ Internet dense with caches: enables "poor" content providers to effectively deliver content (but so does P2P file sharing)



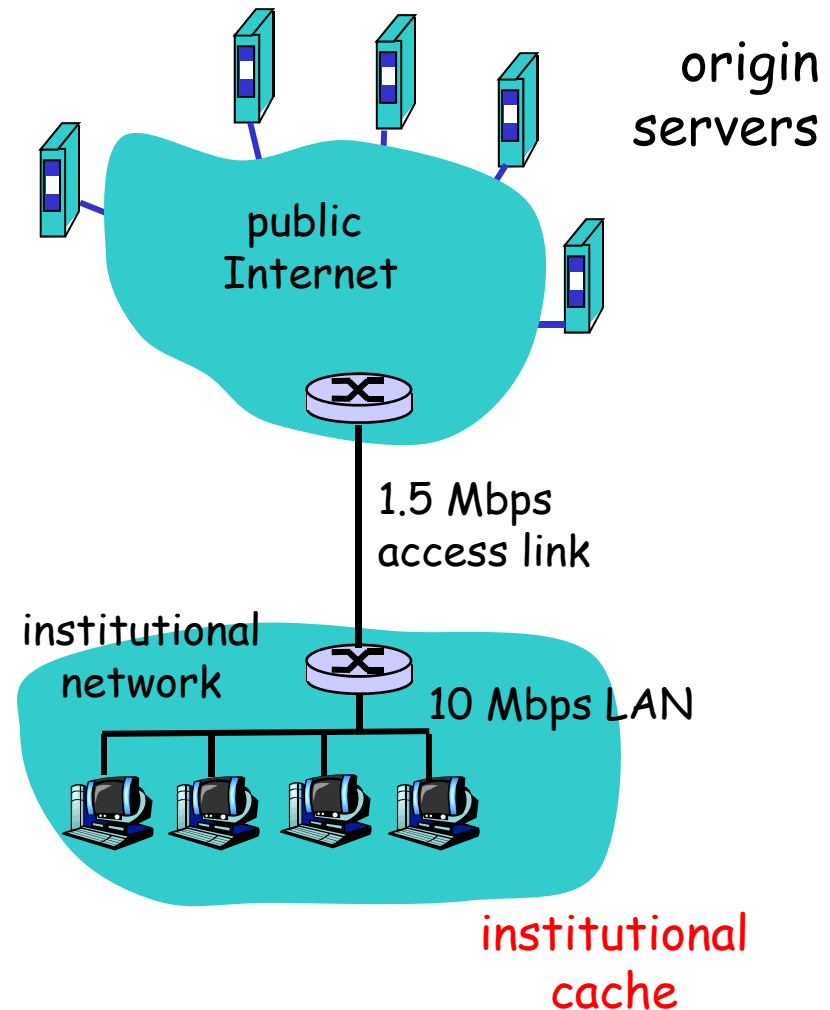
# Caching example

## Assumptions

- ❑ average object size = 100,000 bits
- ❑ avg. request rate from institution's browsers to origin servers = 15/sec
- ❑ delay from institutional router to any origin server and back to router = 2 sec

## Consequences

- ❑ utilization on LAN = 15%
- ❑ utilization on access link = 100%
- ❑ total delay = Internet delay + access delay + LAN delay  
= 2 sec + minutes + milliseconds



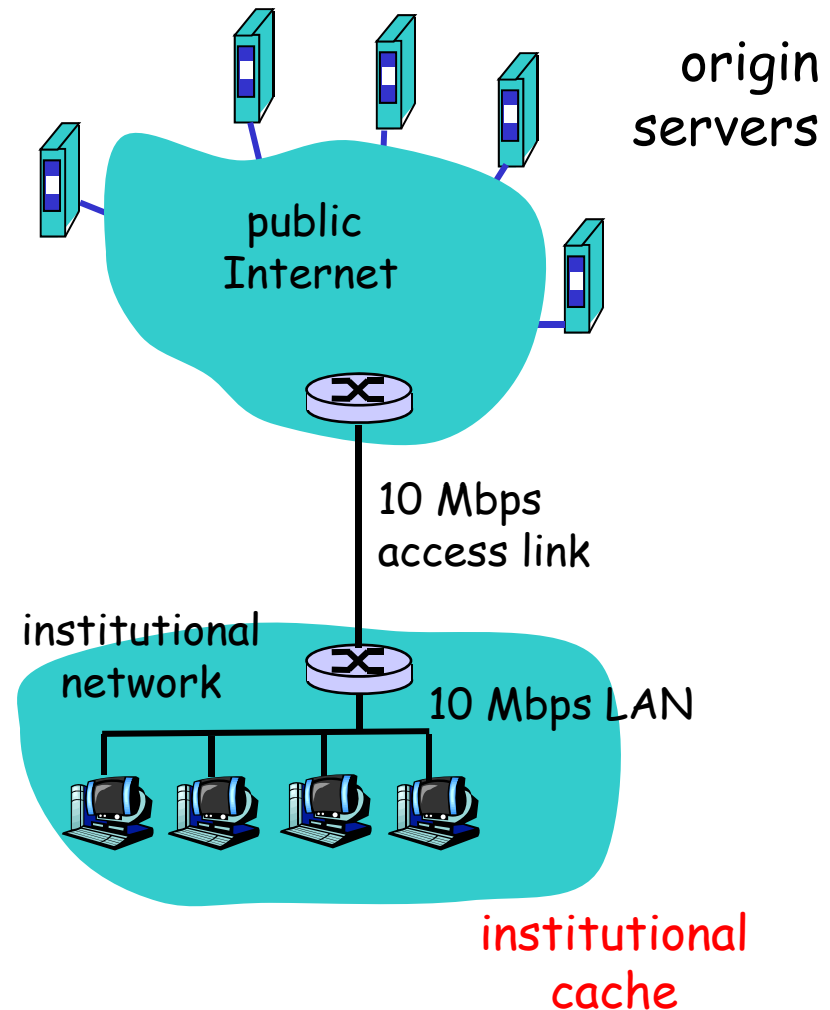
# Caching example (cont)

## possible solution

- ❑ increase bandwidth of access link to, say, 10 Mbps

## consequence

- ❑ utilization on LAN = 15%
- ❑ utilization on access link = 15%
- ❑ Total delay = Internet delay + access delay + LAN delay  
= 2 sec + msec + msec
- ❑ often a costly upgrade



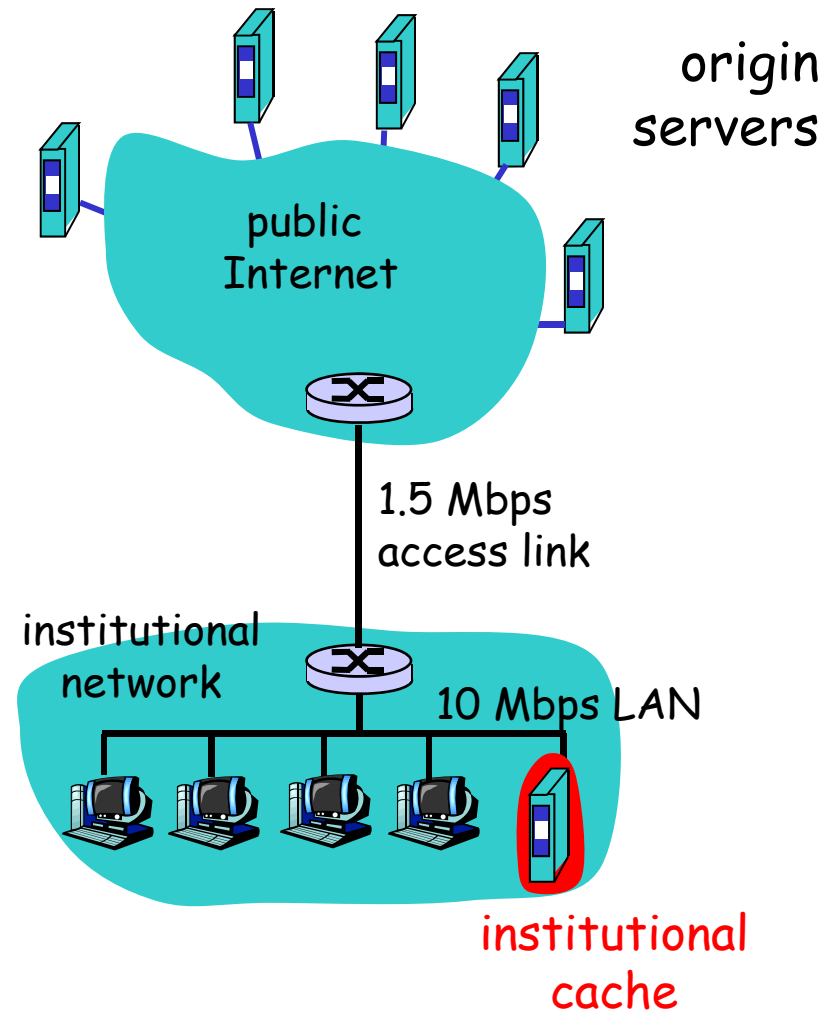
# Caching example (cont)

## possible solution: install cache

- suppose hit rate is 0.4

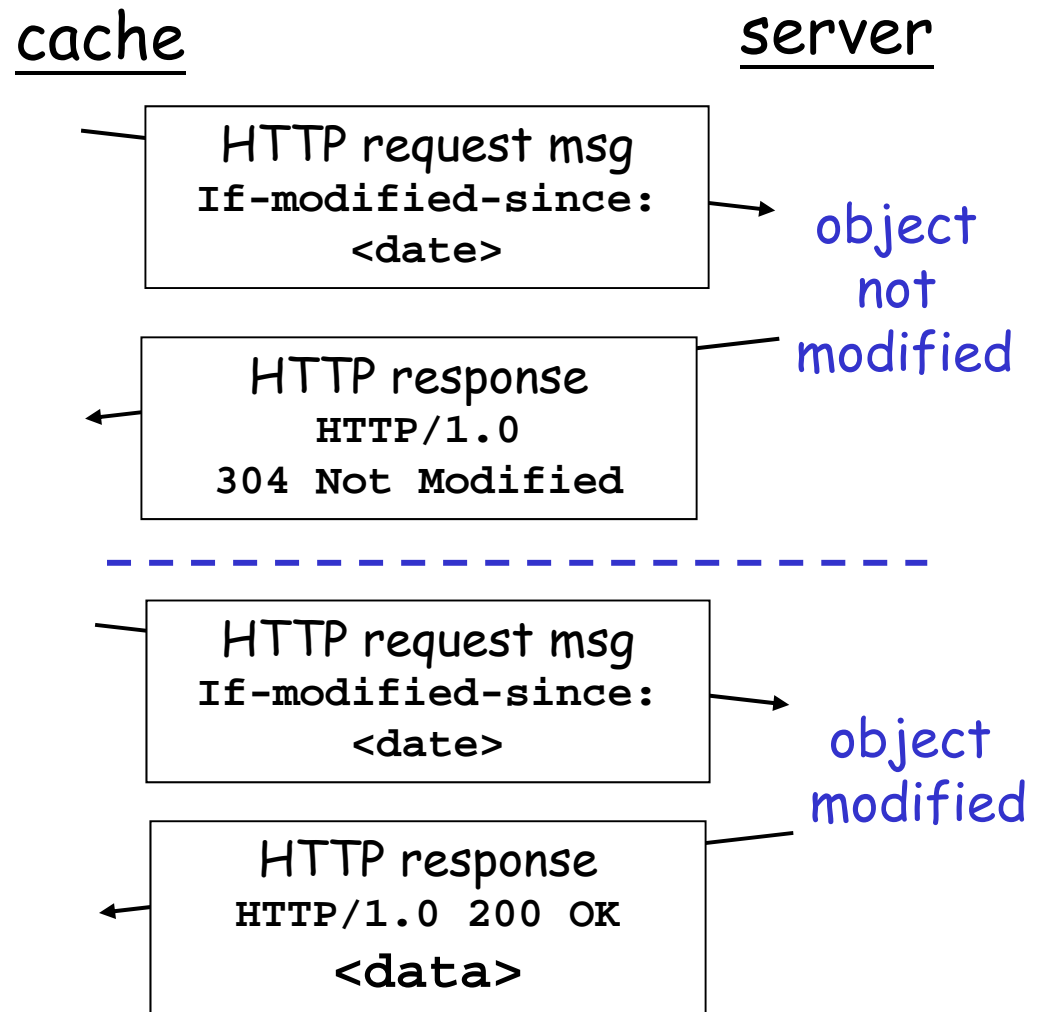
## consequence

- 40% requests will be satisfied almost immediately
- 60% requests satisfied by origin server
- utilization of access link reduced to 60%, resulting in negligible delays (say 10 msec)
- total avg delay = Internet delay + access delay + LAN delay  
$$= .6 \cdot (2.01) \text{ secs} + .4 \cdot \text{milliseconds} < 1.4 \text{ secs}$$



# Conditional GET

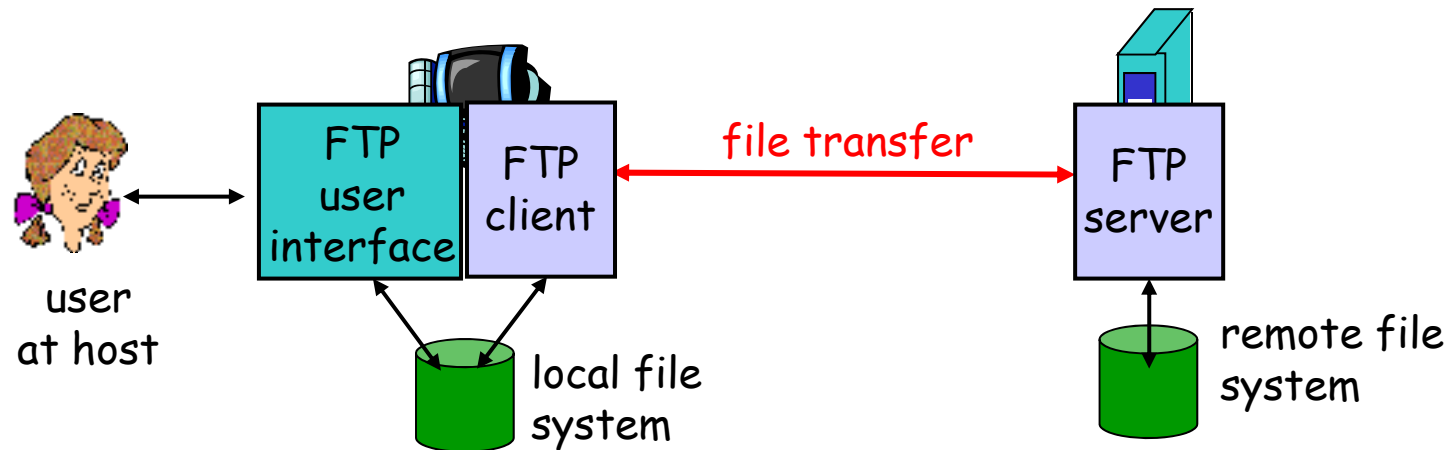
- ❑ **Goal:** don't send object if cache has up-to-date cached version
- ❑ cache: specify date of cached copy in HTTP request  
If-modified-since:  
<date>
- ❑ server: response contains no object if cached copy is up-to-date:  
HTTP/1.0 304 Not Modified



# Chapter 2: Application layer

- ❑ 2.1 Principles of network applications
- ❑ 2.2 Web and HTTP
- ❑ 2.3 FTP
- ❑ 2.4 Electronic Mail
  - ❖ SMTP, POP3, IMAP
- ❑ 2.5 DNS
- ❑ 2.6 P2P applications
- ❑ 2.7 Socket programming with TCP
- ❑ 2.8 Socket programming with UDP
- ❑ 2.9 Building a Web server

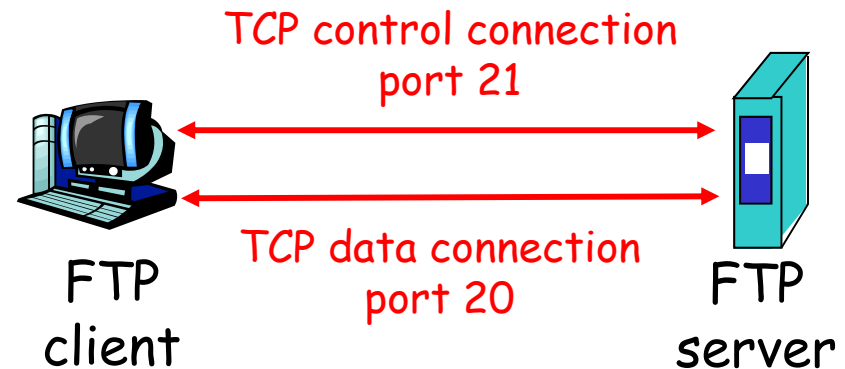
# FTP: the file transfer protocol



- ❑ transfer file to/from remote host
- ❑ client/server model
  - ❖ *client*: side that initiates transfer (either to/from remote)
  - ❖ *server*: remote host
- ❑ ftp: RFC 959
- ❑ ftp server: port 21

# FTP: separate control, data connections

- ❑ FTP client contacts FTP server at port 21, TCP is transport protocol
- ❑ client authorized over control connection
- ❑ client browses remote directory by sending commands over control connection.
- ❑ when server receives file transfer command, server opens 2<sup>nd</sup> TCP connection (for file) to client
- ❑ after transferring one file, server closes data connection.



- ❑ server opens another TCP data connection to transfer another file.
- ❑ control connection: "out of band"
- ❑ FTP server maintains "state": current directory, earlier authentication

# FTP commands, responses

## Sample commands:

- ❑ sent as ASCII text over control channel
- ❑ USER *username*
- ❑ PASS *password*
- ❑ LIST return list of file in current directory
- ❑ RETR *filename* retrieves (gets) file
- ❑ STOR *filename* stores (puts) file onto remote host

## Sample return codes

- ❑ status code and phrase (as in HTTP)
- ❑ 331 Username OK, password required
- ❑ 125 data connection already open; transfer starting
- ❑ 425 Can't open data connection
- ❑ 452 Error writing file



# Chapter 2: Application layer

- ❑ 2.1 Principles of network applications
- ❑ 2.2 Web and HTTP
- ❑ 2.3 FTP
- ❑ 2.4 Electronic Mail
  - ❖ SMTP, POP3, IMAP
- ❑ 2.5 DNS
- ❑ 2.6 P2P applications
- ❑ 2.7 Socket programming with TCP
- ❑ 2.8 Socket programming with UDP

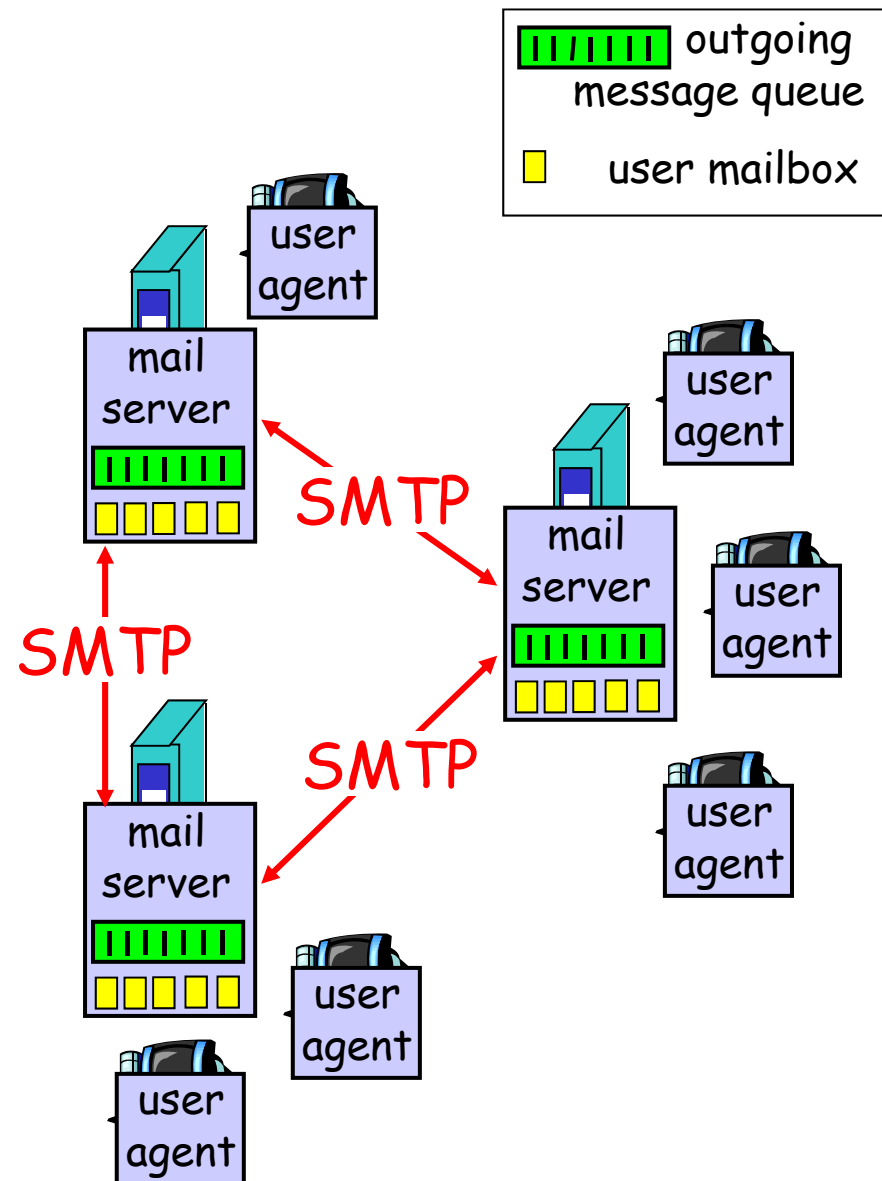
# Electronic Mail

## Three major components:

- ❑ user agents
- ❑ mail servers
- ❑ simple mail transfer protocol: SMTP

## User Agent

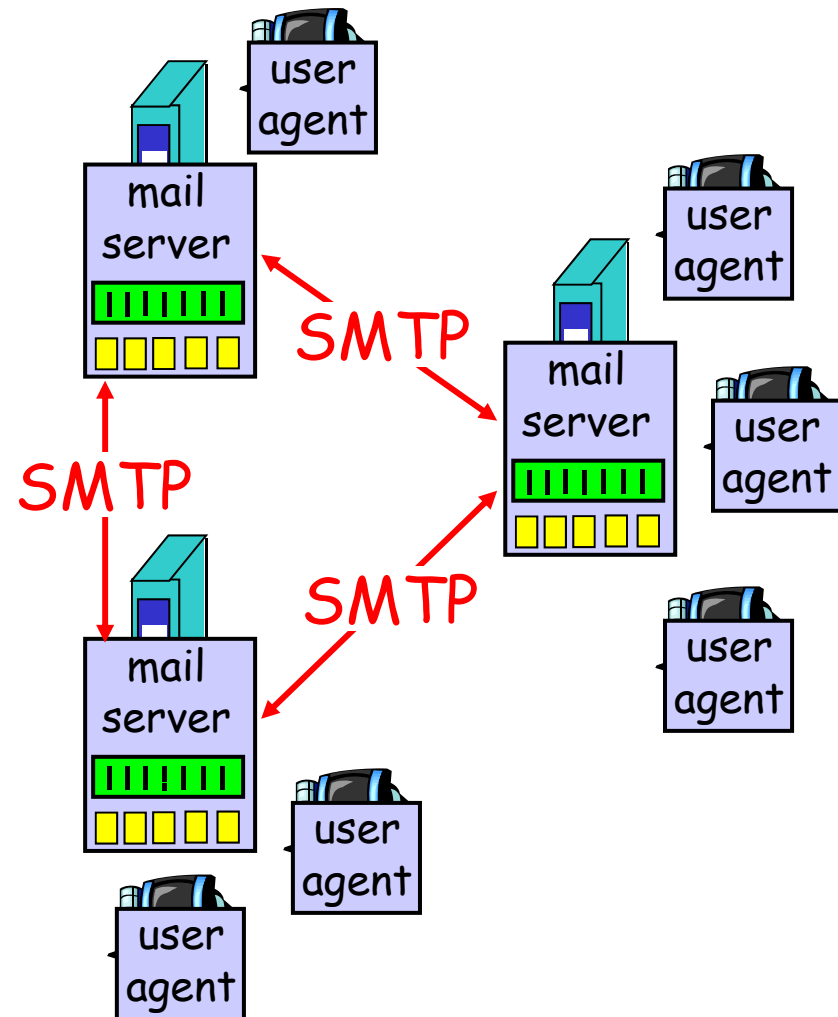
- ❑ a.k.a. "mail reader"
- ❑ composing, editing, reading mail messages
- ❑ e.g., Eudora, Outlook, elm, Mozilla Thunderbird
- ❑ outgoing, incoming messages stored on server



# Electronic Mail: mail servers

## Mail Servers

- ❑ **mailbox** contains incoming messages for user
- ❑ **message queue** of outgoing (to be sent) mail messages
- ❑ **SMTP protocol** between mail servers to send email messages
  - ❖ client: sending mail server
  - ❖ "server": receiving mail server

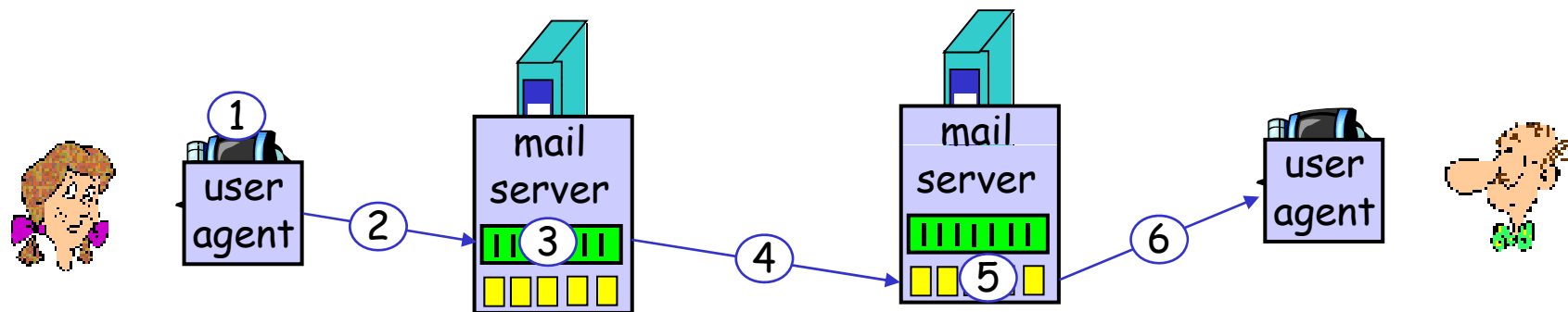


# Electronic Mail: SMTP [RFC 2821]

- ❑ uses TCP to reliably transfer email message from client to server, port 25
- ❑ direct transfer: sending server to receiving server
- ❑ three phases of transfer
  - ❖ handshaking (greeting)
  - ❖ transfer of messages
  - ❖ closure
- ❑ command/response interaction
  - ❖ **commands**: ASCII text
  - ❖ **response**: status code and phrase
- ❑ messages must be in 7-bit ASCII

# Scenario: Alice sends message to Bob

- 1) Alice uses UA to compose message and "to" `bob@someschool.edu`
- 2) Alice's UA sends message to her mail server; message placed in message queue
- 3) Client side of SMTP opens TCP connection with Bob's mail server
- 4) SMTP client sends Alice's message over the TCP connection
- 5) Bob's mail server places the message in Bob's mailbox
- 6) Bob invokes his user agent to read message



# Sample SMTP interaction

```
S: 220 hamburger.edu
C: HELO crepes.fr
S: 250 Hello crepes.fr, pleased to meet you
C: MAIL FROM: <alice@crepes.fr>
S: 250 alice@crepes.fr... Sender ok
C: RCPT TO: <bob@hamburger.edu>
S: 250 bob@hamburger.edu ... Recipient ok
C: DATA
S: 354 Enter mail, end with "." on a line by itself
C: Do you like ketchup?
C: How about pickles?
C: .
S: 250 Message accepted for delivery
C: QUIT
S: 221 hamburger.edu closing connection
```

## Try SMTP interaction for yourself:

- ❑ `telnet servername 25`
- ❑ see 220 reply from server
- ❑ enter HELO, MAIL FROM, RCPT TO, DATA, QUIT commands

above lets you send email without using email client (reader)

# SMTP: final words

- ❑ SMTP uses persistent connections
- ❑ SMTP requires message (header & body) to be in 7-bit ASCII
- ❑ SMTP server uses CRLF.CRLF to determine end of message

## Comparison with HTTP:

- ❑ HTTP: pull
- ❑ SMTP: push
- ❑ both have ASCII command/response interaction, status codes
- ❑ HTTP: each object encapsulated in its own response msg
- ❑ SMTP: multiple objects sent in multipart msg

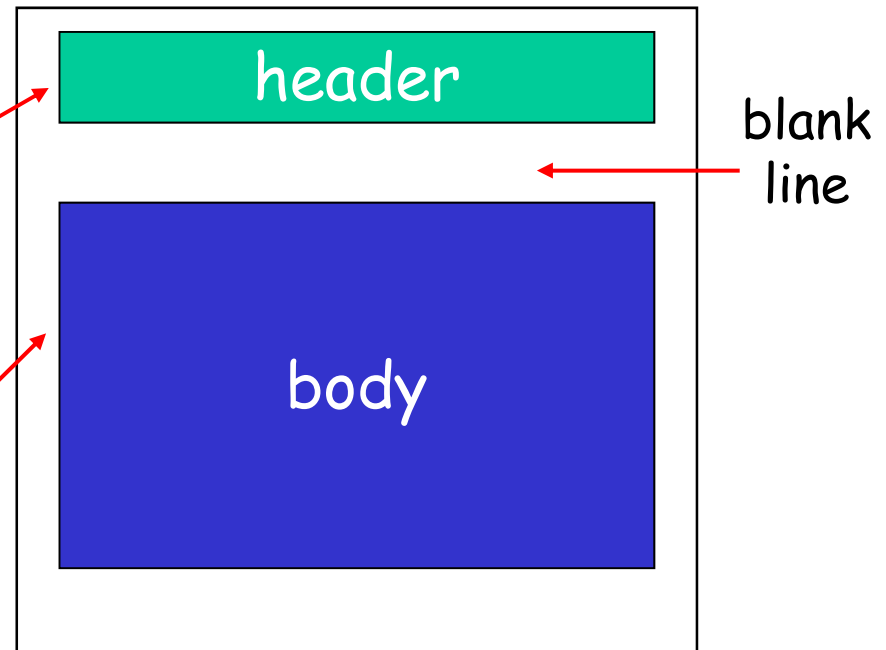


# Mail message format

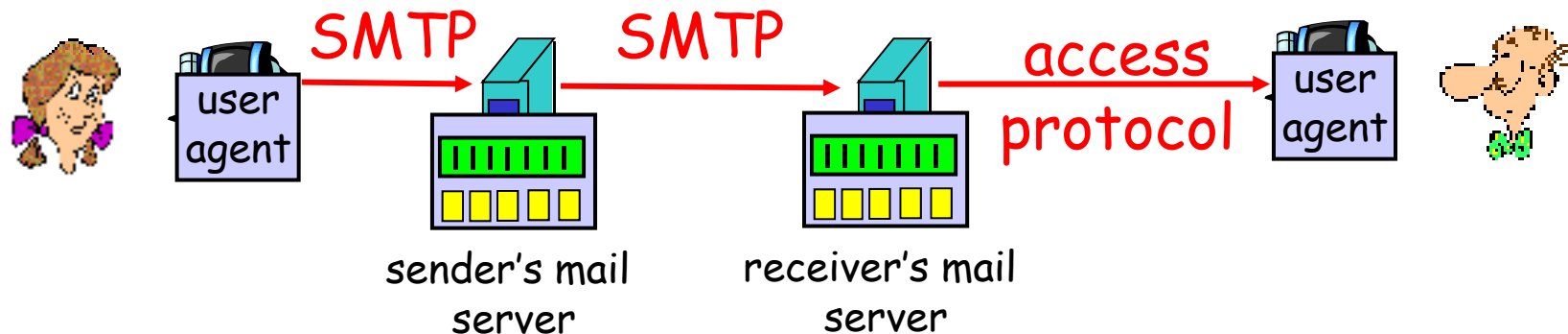
SMTP: protocol for exchanging email msgs

RFC 822: standard for text message format:

- ❑ header lines, e.g.,
  - ❖ To:
  - ❖ From:
  - ❖ Subject:*different from SMTP commands!*
- ❑ body
  - ❖ the "message", ASCII characters only



# Mail access protocols



- ❑ SMTP: delivery/storage to receiver's server
- ❑ Mail access protocol: retrieval from server
  - ❖ POP: Post Office Protocol [RFC 1939]
    - authorization (agent <-->server) and download
  - ❖ IMAP: Internet Mail Access Protocol [RFC 1730]
    - more features (more complex)
    - manipulation of stored msgs on server
  - ❖ HTTP: gmail, Hotmail, Yahoo! Mail, etc.

# POP3 protocol

## authorization phase

- client commands:
  - ❖ user: declare username
  - ❖ pass: password
- server responses
  - ❖ +OK
  - ❖ -ERR

## transaction phase, client:

- list: list message numbers
- retr: retrieve message by number
- dele: delete
- quit

```
S: +OK POP3 server ready
C: user bob
S: +OK
C: pass hungry
S: +OK user successfully logged on

C: list
S: 1 498
S: 2 912
S: .
C: retr 1
S: <message 1 contents>
S: .
C: dele 1
C: retr 2
S: <message 1 contents>
S: .
C: dele 2
C: quit
S: +OK POP3 server signing off
```

# POP3 (more) and IMAP

## More about POP3

- ❑ Previous example uses “download and delete” mode.
- ❑ Bob cannot re-read e-mail if he changes client
- ❑ “Download-and-keep”: copies of messages on different clients
- ❑ POP3 is stateless across sessions

## IMAP

- ❑ Keep all messages in one place: the server
- ❑ Allows user to organize messages in folders
- ❑ IMAP keeps user state across sessions:
  - ❖ names of folders and mappings between message IDs and folder name

# Chapter 2: Application layer

- ❑ 2.1 Principles of network applications
- ❑ 2.2 Web and HTTP
- ❑ 2.3 FTP
- ❑ 2.4 Electronic Mail
  - ❖ SMTP, POP3, IMAP
- ❑ 2.5 DNS
- ❑ 2.6 P2P applications
- ❑ 2.7 Socket programming with TCP
- ❑ 2.8 Socket programming with UDP
- ❑ 2.9 Building a Web server

# DNS: Domain Name System

**People:** many identifiers:

- ❖ SSN, name, passport #

**Internet hosts, routers:**

- ❖ IP address (32 bit) - used for addressing datagrams
- ❖ "name", e.g.,  
ww.yahoo.com - used by humans

**Q:** map between IP addresses and name ?

**Domain Name System:**

- ❑ *distributed database*  
implemented in hierarchy of many *name servers*
- ❑ *application-layer protocol*  
host, routers, name servers to communicate to *resolve* names (address/name translation)
  - ❖ note: core Internet function, implemented as application-layer protocol
  - ❖ complexity at network's "edge"

# DNS

## DNS services

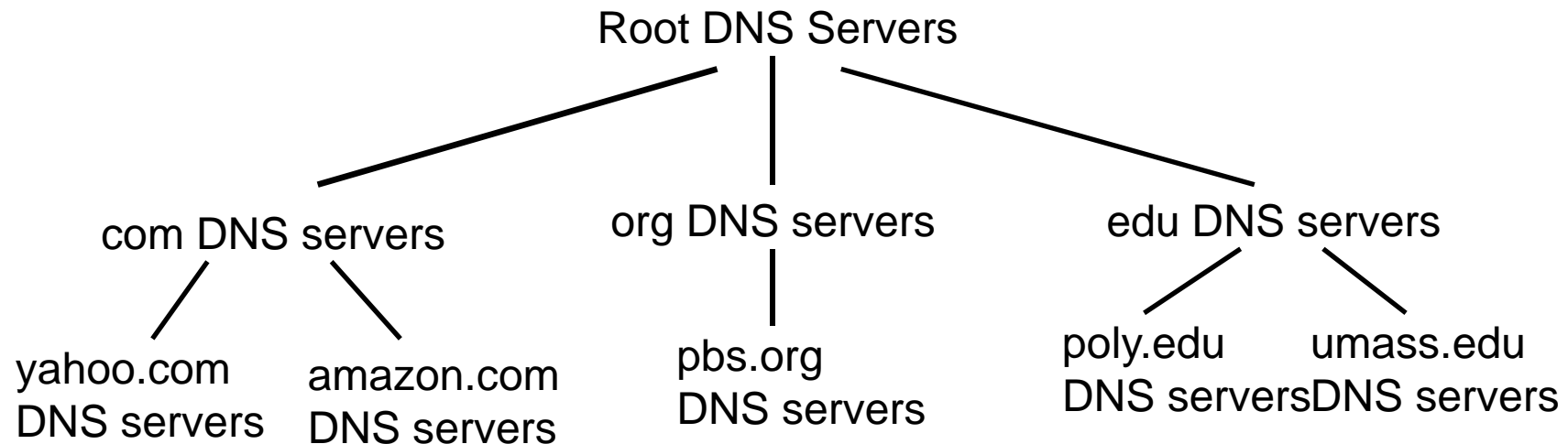
- ❑ hostname to IP address translation
- ❑ host aliasing
  - ❖ Canonical, alias names
- ❑ mail server aliasing
- ❑ load distribution
  - ❖ replicated Web servers: set of IP addresses for one canonical name

## Why not centralize DNS?

- ❑ single point of failure
- ❑ traffic volume
- ❑ distant centralized database
- ❑ maintenance

doesn't *scale*!

# Distributed, Hierarchical Database



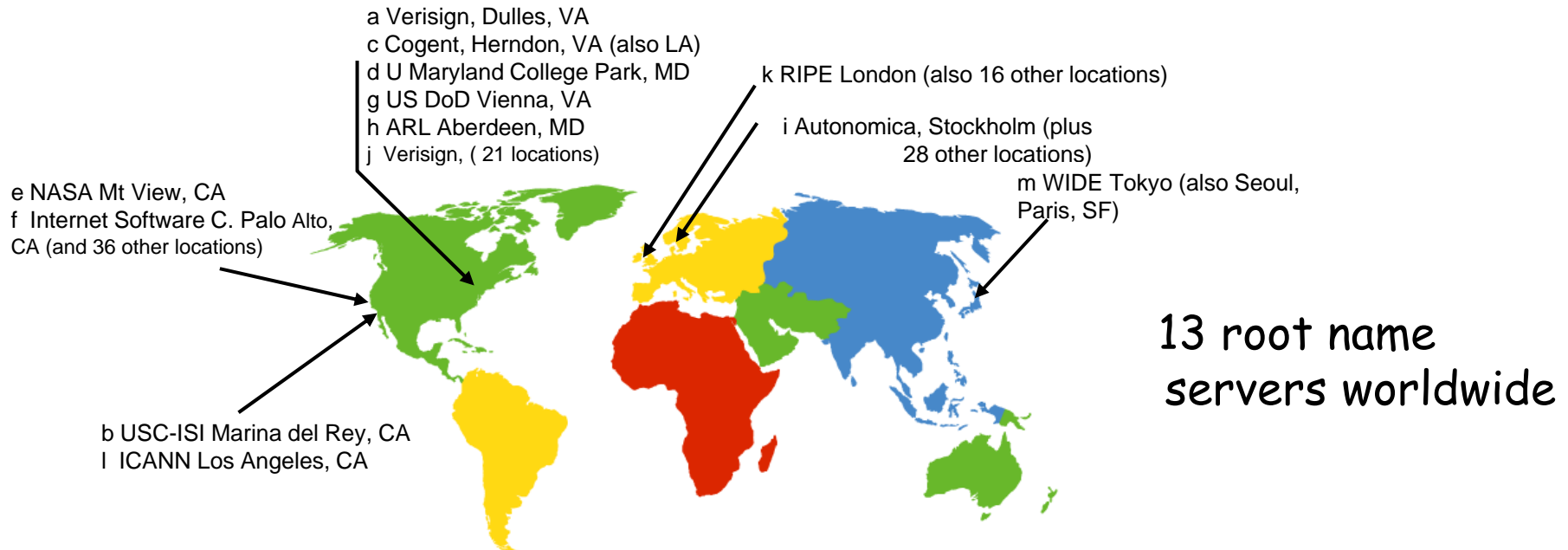
Client wants IP for www.amazon.com; 1<sup>st</sup> approx:

- ❑ client queries a root server to find com DNS server
- ❑ client queries com DNS server to get amazon.com DNS server
- ❑ client queries amazon.com DNS server to get IP address for www.amazon.com



# DNS: Root name servers

- ❑ contacted by local name server that can not resolve name
- ❑ root name server:
  - ❖ contacts authoritative name server if name mapping not known
  - ❖ gets mapping
  - ❖ returns mapping to local name server



# TLD and Authoritative Servers

## ❑ Top-level domain (TLD) servers:

- ❖ responsible for com, org, net, edu, etc, and all top-level country domains uk, fr, ca, jp.
- ❖ Network Solutions maintains servers for com TLD
- ❖ Educause for edu TLD

## ❑ Authoritative DNS servers:

- ❖ organization's DNS servers, providing authoritative hostname to IP mappings for organization's servers (e.g., Web, mail).
- ❖ can be maintained by organization or service provider

# Local Name Server

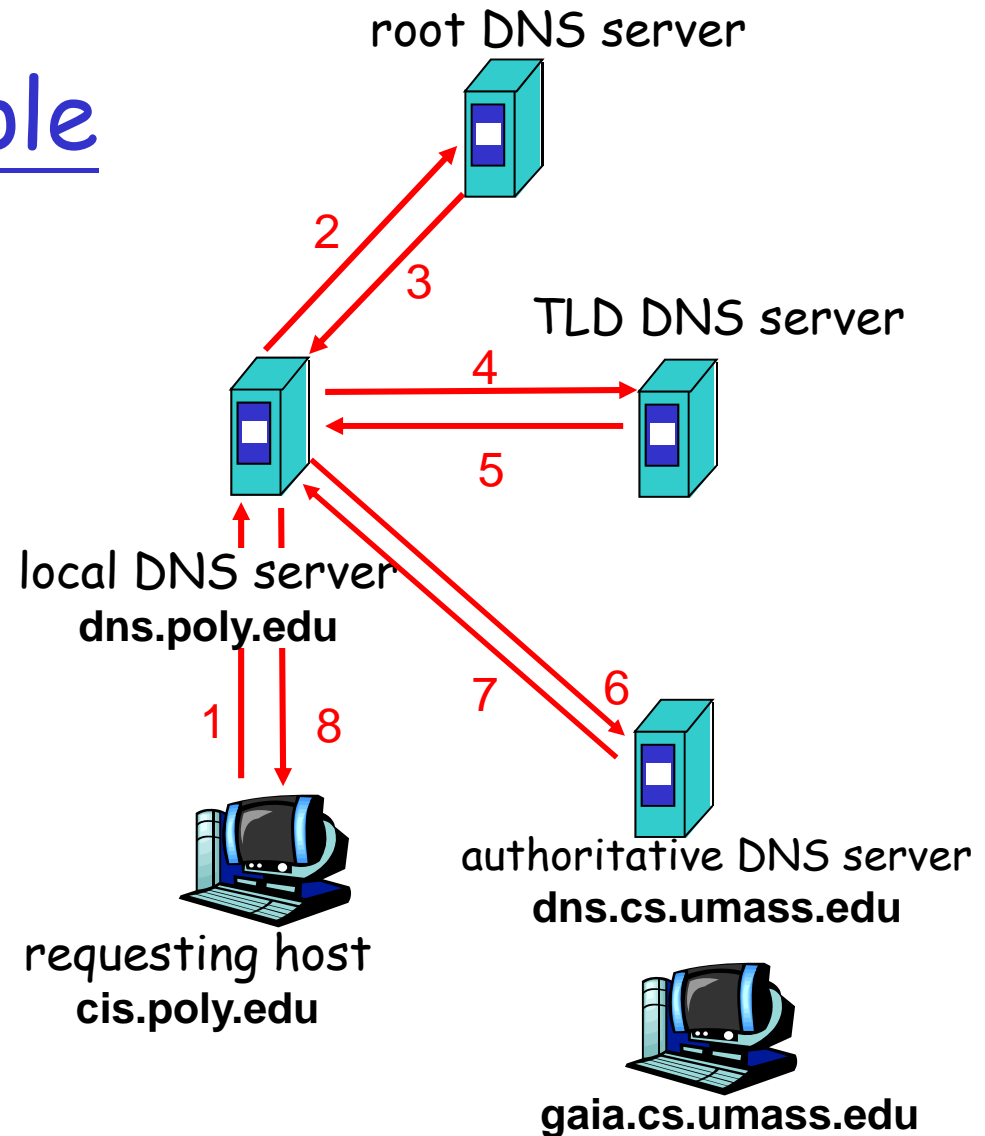
- ❑ does not strictly belong to hierarchy
- ❑ each ISP (residential ISP, company, university) has one.
  - ❖ also called "default name server"
- ❑ when host makes DNS query, query is sent to its local DNS server
  - ❖ acts as proxy, forwards query into hierarchy

# DNS name resolution example

- Host at cis.poly.edu wants IP address for gaia.cs.umass.edu

## iterated query:

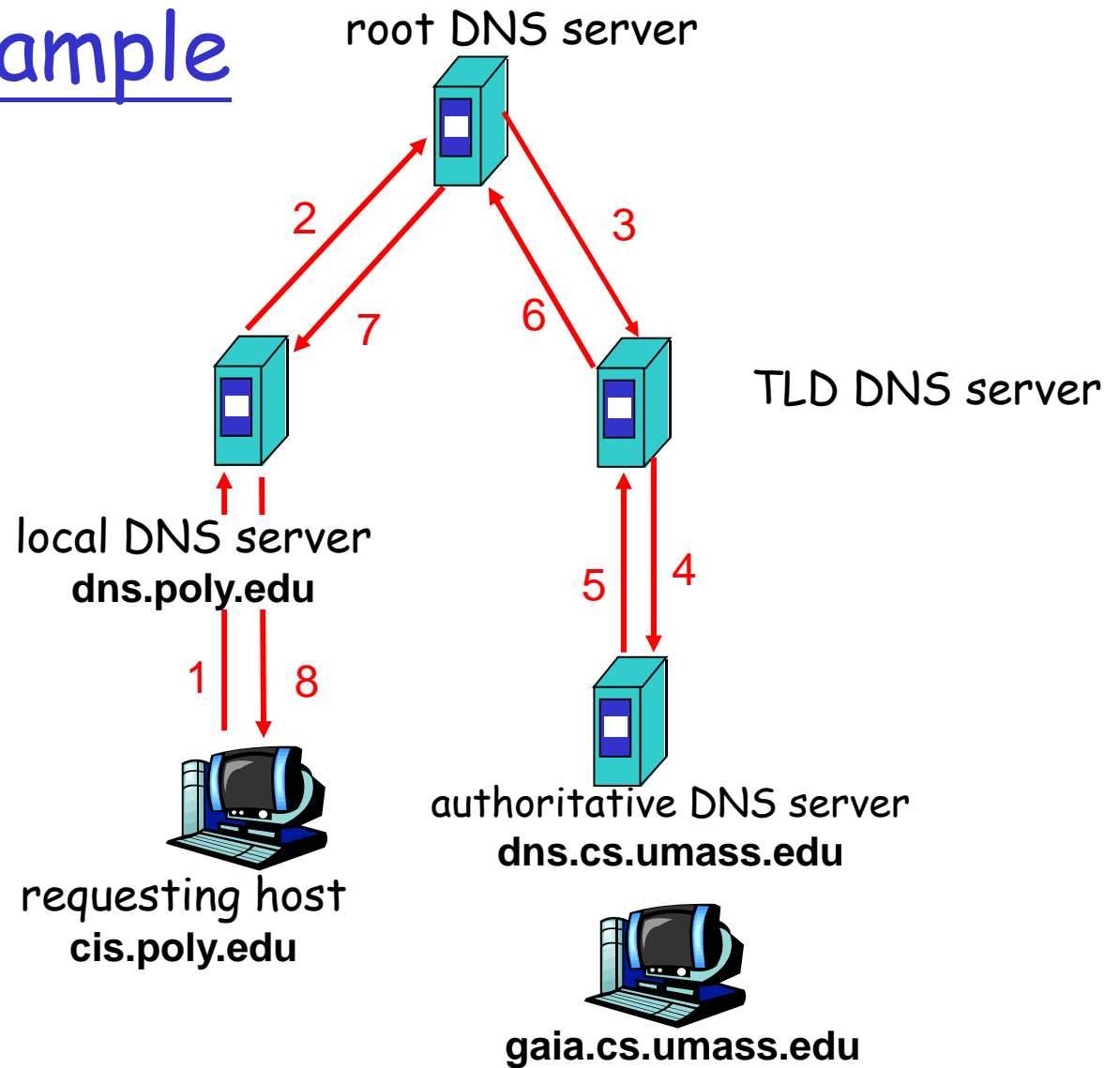
- contacted server replies with name of server to contact
- "I don't know this name, but ask this server"



# DNS name resolution example

## recursive query:

- ❑ puts burden of name resolution on contacted name server
- ❑ heavy load?



# DNS: caching and updating records

- once (any) name server learns mapping, it *caches* mapping
  - ❖ cache entries timeout (disappear) after some time
  - ❖ TLD servers typically cached in local name servers
    - Thus root name servers not often visited
- update/notify mechanisms under design by IETF
  - ❖ RFC 2136
  - ❖ <http://www.ietf.org/html.charters/dnsind-charter.html>

# DNS records

DNS: distributed db storing resource records (RR)

RR format: (name, value, type, ttl)

## □ Type=A

- ❖ name is hostname
- ❖ value is IP address

## □ Type=NS

- ❖ name is domain (e.g. foo.com)
- ❖ value is hostname of authoritative name server for this domain

## □ Type=CNAME

- ❖ name is alias name for some "canonical" (the real) name  
www.ibm.com is really  
servereast.backup2.ibm.com
- ❖ value is canonical name

## □ Type=MX

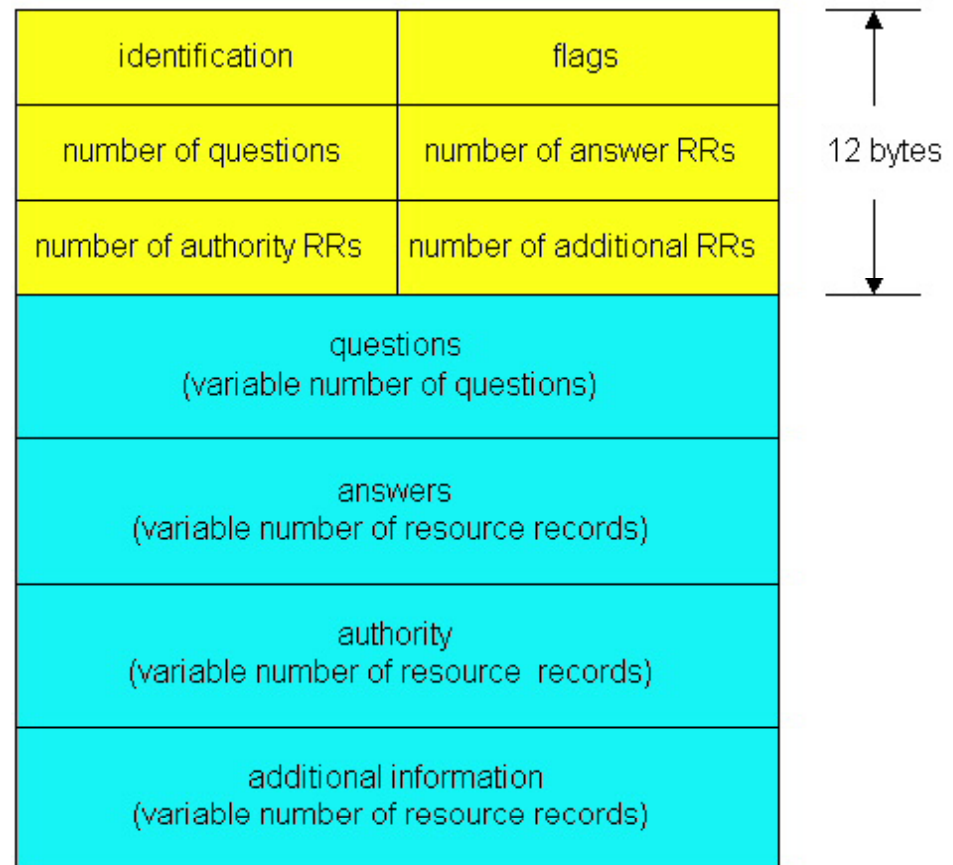
- ❖ value is name of mailserver associated with name

# DNS protocol, messages

DNS protocol : *query* and *reply* messages, both with same *message format*

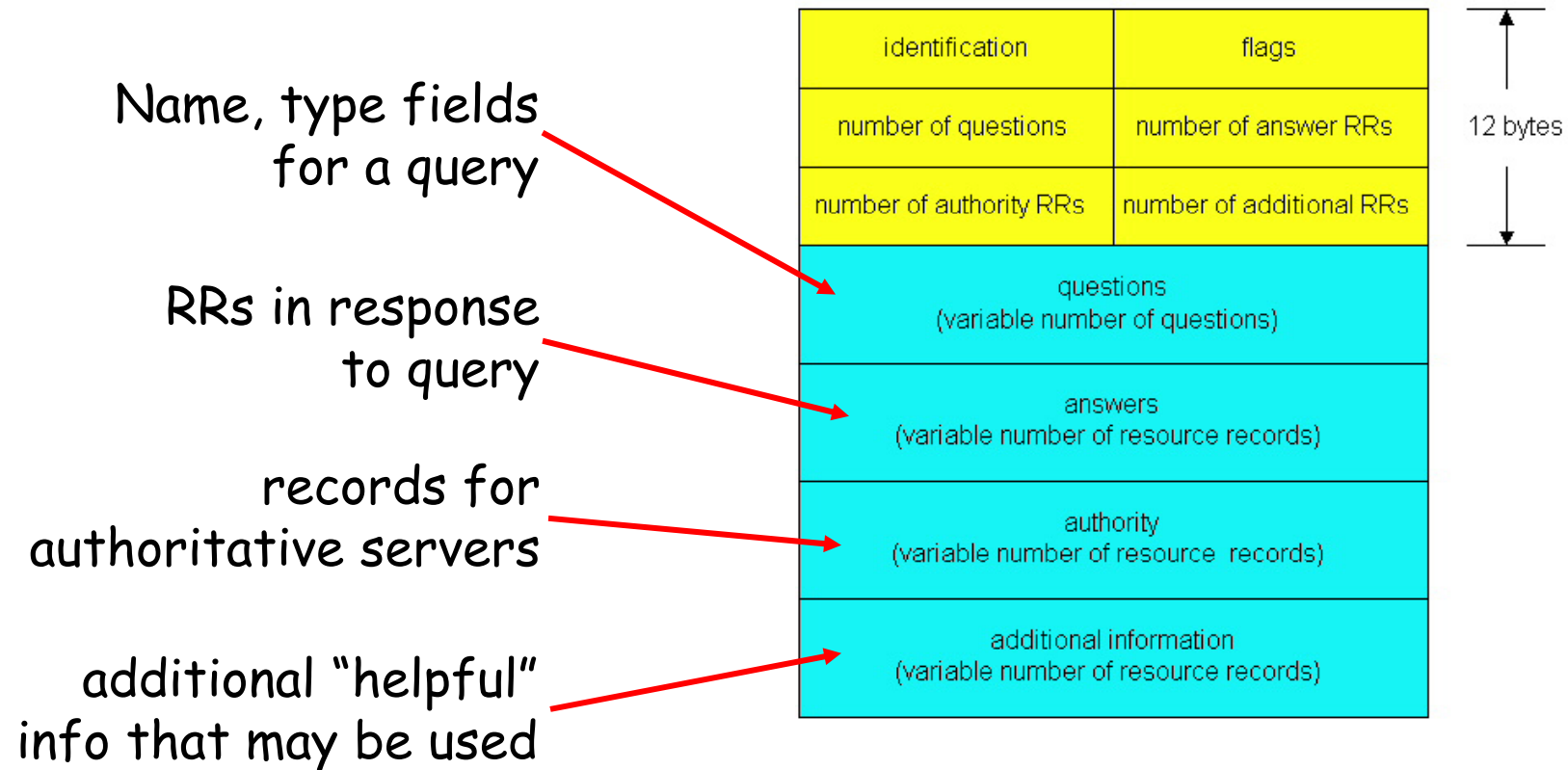
msg header

- ❑ **identification**: 16 bit #  
for query, reply to query  
uses same #
- ❑ **flags**:
  - ❖ query or reply
  - ❖ recursion desired
  - ❖ recursion available
  - ❖ reply is authoritative





# DNS protocol, messages



# Inserting records into DNS

- ❑ example: new startup "Network Utopia"
- ❑ register name networkutopia.com at *DNS registrar* (e.g., Network Solutions)
  - ❖ provide names, IP addresses of authoritative name server (primary and secondary)
  - ❖ registrar inserts two RRs into com TLD server:

`(networkutopia.com, dns1.networkutopia.com, NS)`

`(dns1.networkutopia.com, 212.212.212.1, A)`

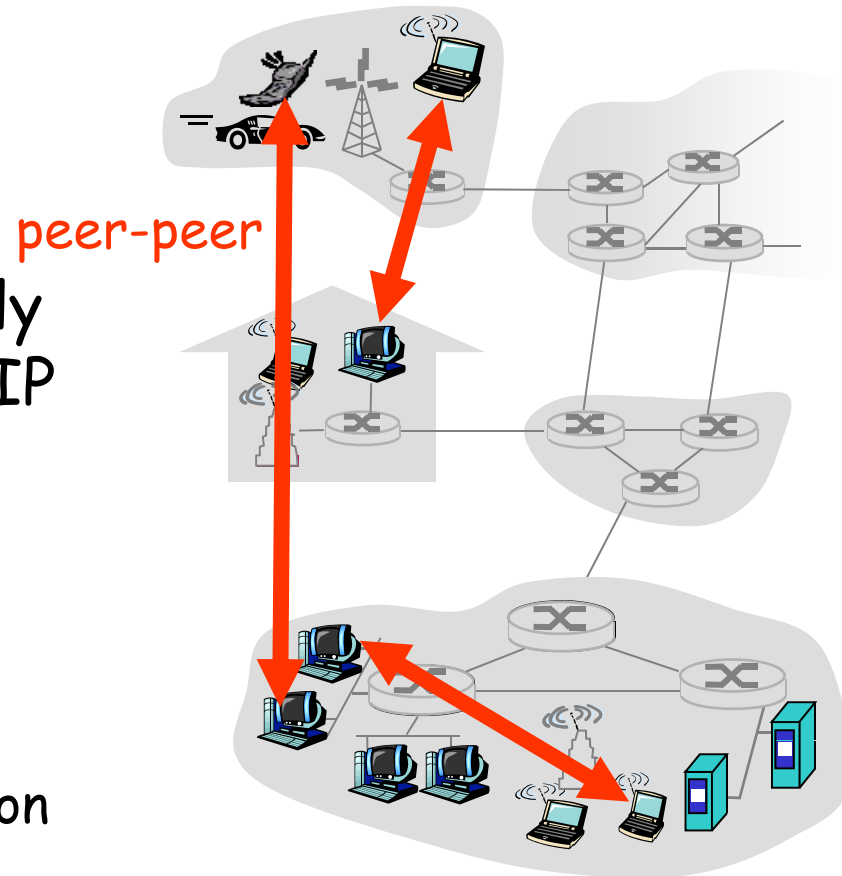
- ❑ create authoritative server Type A record for `www.networkutopia.com`; Type MX record for `networkutopia.com`
- ❑ *How do people get IP address of your Web site?*

# Chapter 2: Application layer

- ❑ 2.1 Principles of network applications
  - ❖ app architectures
  - ❖ app requirements
- ❑ 2.2 Web and HTTP
- ❑ 2.4 Electronic Mail
  - ❖ SMTP, POP3, IMAP
- ❑ 2.5 DNS
- ❑ 2.6 P2P applications
- ❑ 2.7 Socket programming with TCP
- ❑ 2.8 Socket programming with UDP

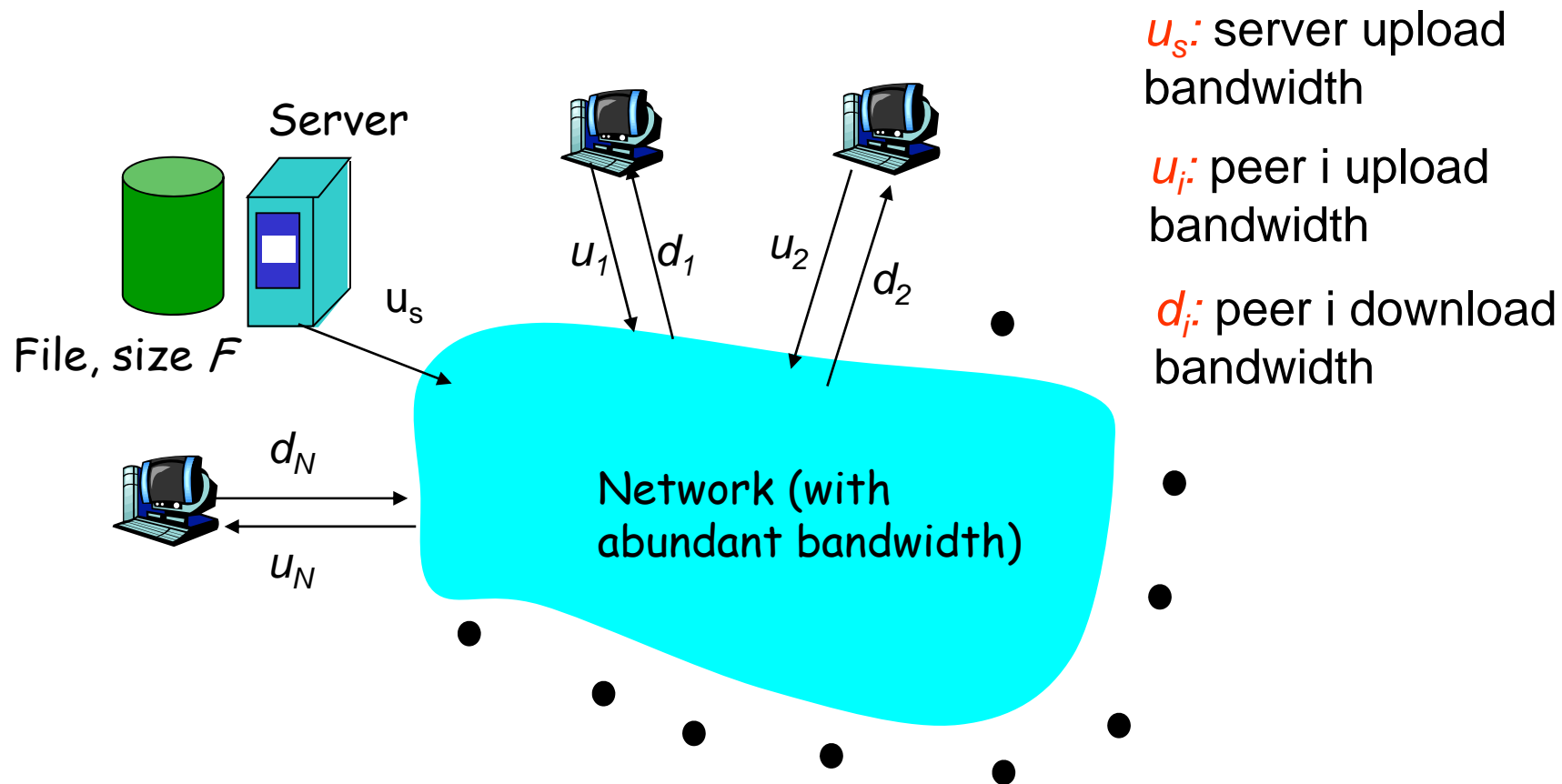
# Pure P2P architecture

- ❑ *no* always-on server
- ❑ arbitrary end systems directly communicate
- ❑ peers are intermittently connected and change IP addresses
- ❑ Three topics:
  - ❖ File distribution
  - ❖ Searching for information
  - ❖ Case Study: Skype



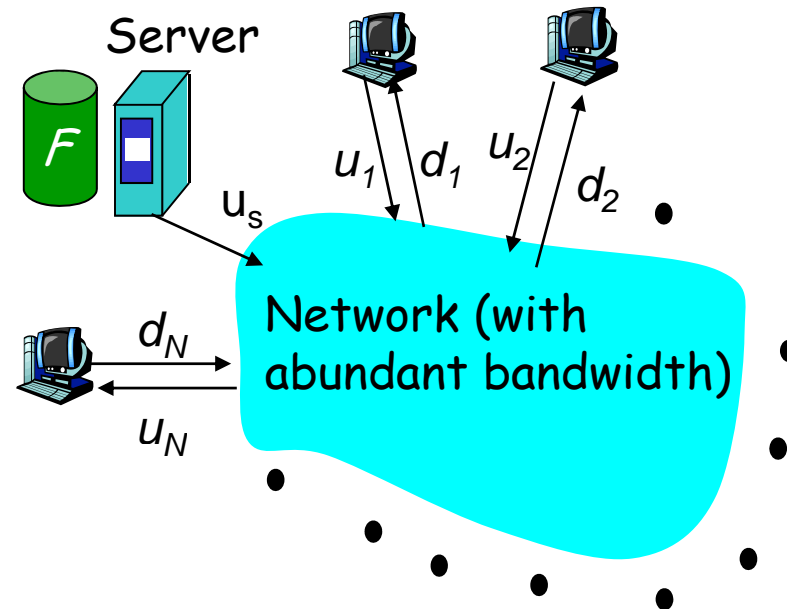
# File Distribution: Server-Client vs P2P

Question: How much time to distribute file from one server to  $N$  peers?



# File distribution time: server-client

- server sequentially sends  $N$  copies:
  - ❖  $NF/u_s$  time
- client  $i$  takes  $F/d_i$  time to download

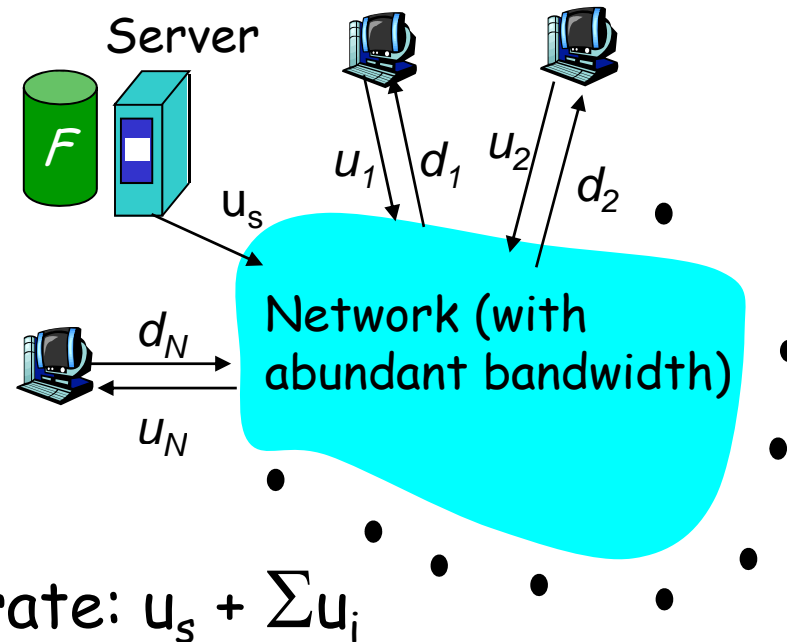


Time to distribute  $F$   
to  $N$  clients using client/server approach  $= d_{cs} = \max \{ NF/u_s, F/\min_i(d_i) \}$

increases linearly in  $N$   
(for large  $N$ )

## File distribution time: P2P

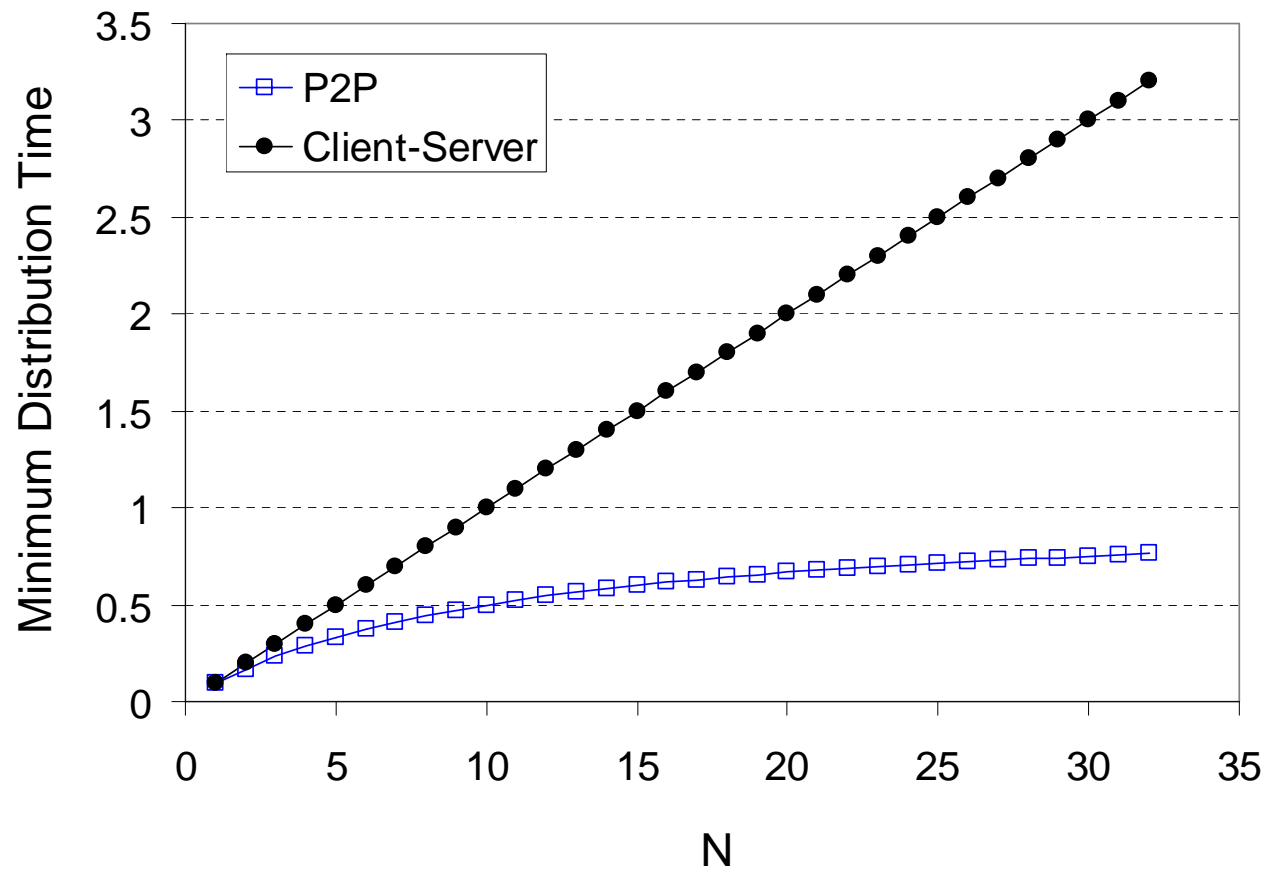
- ❑ server must send one copy:  $F/u_s$  time
- ❑ client  $i$  takes  $F/d_i$  time to download
- ❑  $NF$  bits must be downloaded (aggregate)
  - ❑ fastest possible upload rate:  $u_s + \sum u_i$



$$d_{\text{P2P}} = \max \left\{ F/u_s, F/\min(d_i)_i, NF/(u_s + \sum u_i) \right\}$$

## Server-client vs. P2P: example

Client upload rate =  $u$ ,  $F/u = 1$  hour,  $u_s = 10u$ ,  $d_{\min} \geq u_s$



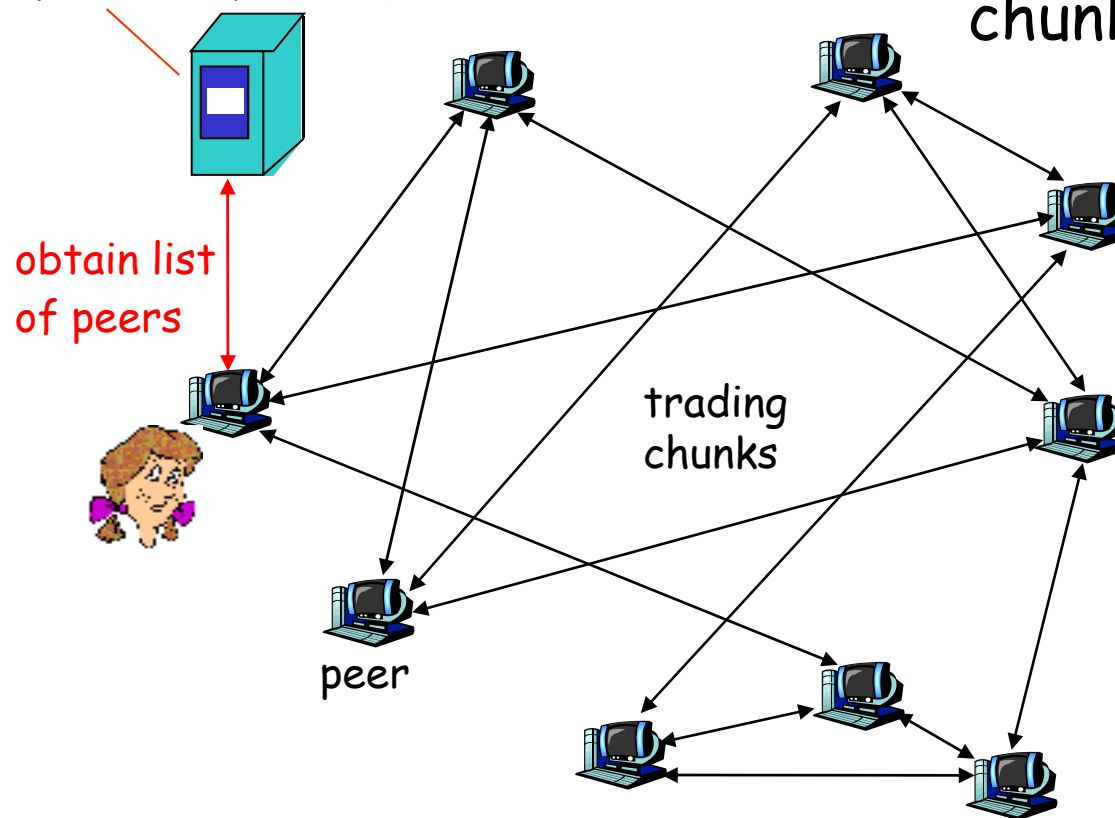


# File distribution: BitTorrent

## ❑ P2P file distribution

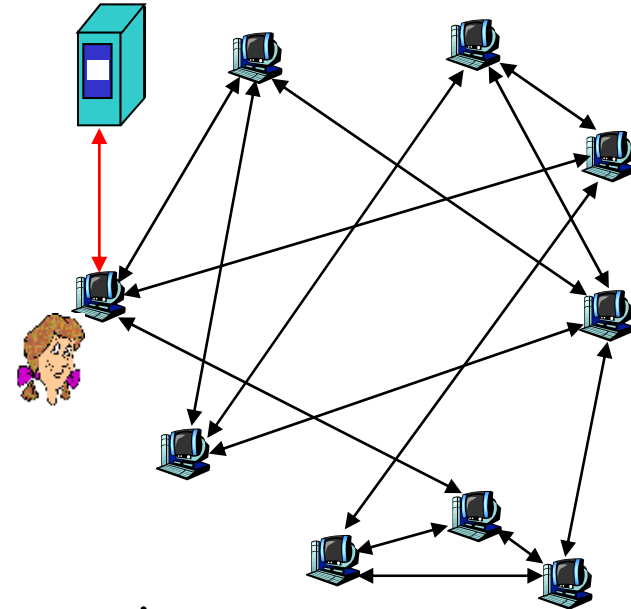
tracker: tracks peers participating in torrent

torrent: group of peers exchanging chunks of a file



# BitTorrent (1)

- ❑ file divided into 256KB *chunks*.
- ❑ peer joining torrent:
  - ❖ has no chunks, but will accumulate them over time
  - ❖ registers with tracker to get list of peers, connects to subset of peers ("neighbors")
- ❑ while downloading, peer uploads chunks to other peers.
- ❑ peers may come and go
- ❑ once peer has entire file, it may (selfishly) leave or (altruistically) remain



# BitTorrent (2)

## Pulling Chunks

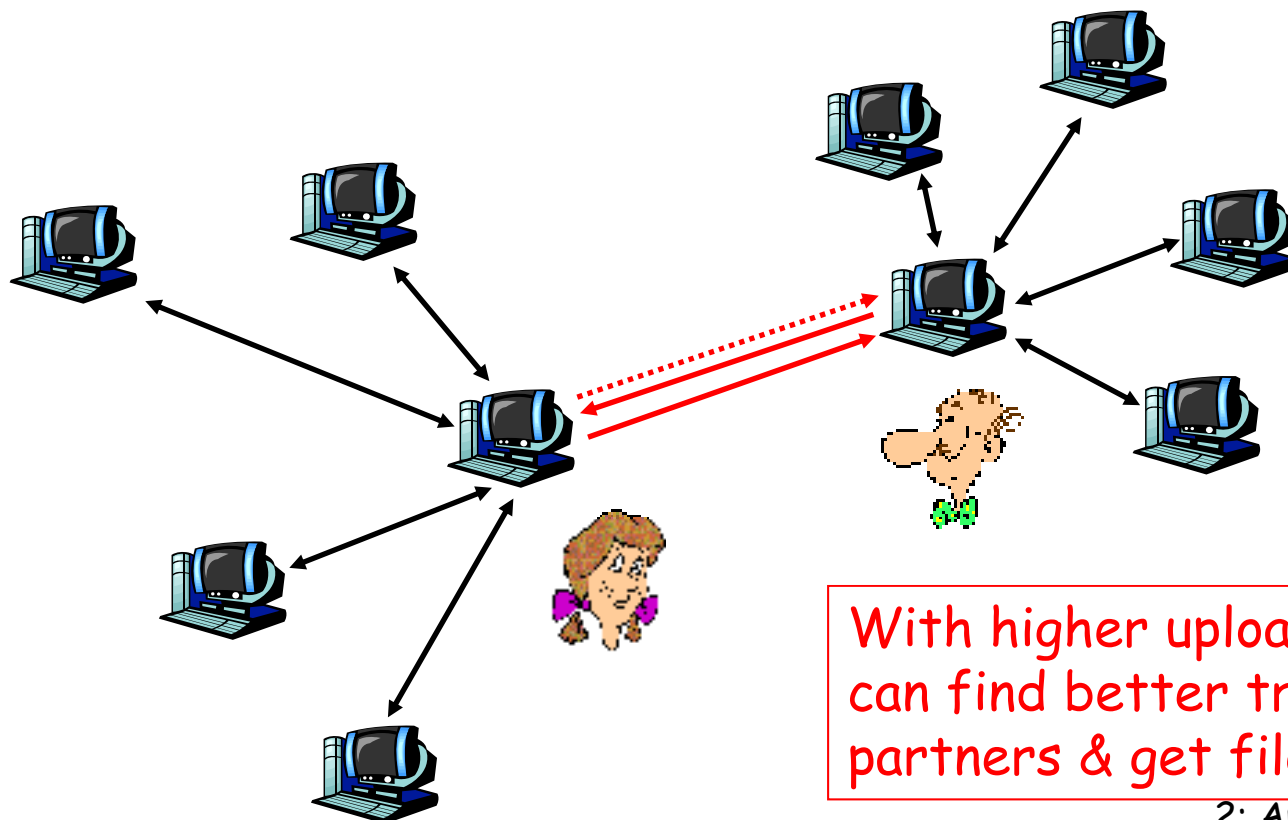
- at any given time, different peers have different subsets of file chunks
- periodically, a peer (Alice) asks each neighbor for list of chunks that they have.
- Alice sends requests for her missing chunks
  - ❖ rarest first

## Sending Chunks: tit-for-tat

- Alice sends chunks to four neighbors currently sending her chunks *at the highest rate*
  - ❖ re-evaluate top 4 every 10 secs
- every 30 secs: randomly select another peer, starts sending chunks
  - ❖ newly chosen peer may join top 4
  - ❖ "optimistically unchoke"

# BitTorrent: Tit-for-tat

- (1) Alice "optimistically unchokes" Bob
- (2) Alice becomes one of Bob's top-four providers; Bob reciprocates
- (3) Bob becomes one of Alice's top-four providers



With higher upload rate,  
can find better trading  
partners & get file faster!

# Distributed Hash Table (DHT)

- ❑ DHT = distributed P2P database
- ❑ Database has (key, value) pairs;
  - ❖ key: ss number; value: human name
  - ❖ key: content type; value: IP address
- ❑ Peers query DB with key
  - ❖ DB returns values that match the key
- ❑ Peers can also insert (key, value) peers

# DHT Identifiers

- ❑ Assign integer identifier to each peer in range  $[0, 2^n - 1]$ .
  - ❖ Each identifier can be represented by  $n$  bits.
- ❑ Require each key to be an integer in **same range**.
- ❑ To get integer keys, hash original key.
  - ❖ eg, key =  $h(\text{"Led Zeppelin IV"})$
  - ❖ This is why they call it a distributed "hash" table

# How to assign keys to peers?

- Central issue:

- ❖ Assigning (key, value) pairs to peers.

- Rule: assign key to the peer that has the **closest** ID.

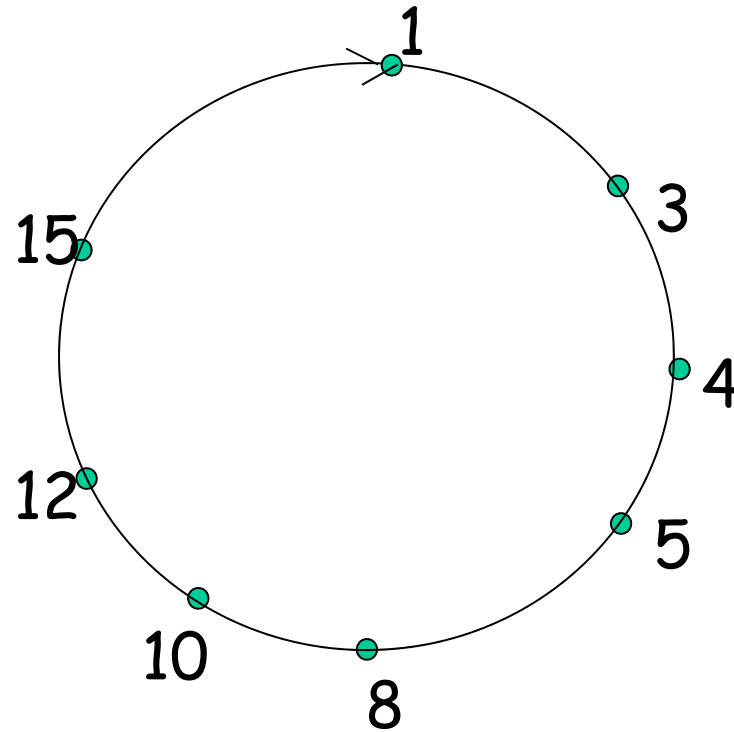
- Convention in lecture: closest is the **immediate successor** of the key.

- Ex:  $n=4$ ; peers: 1,3,4,5,8,10,12,14;

- ❖ key = 13, then successor peer = 14

- ❖ key = 15, then successor peer = 1

# Circular DHT (1)

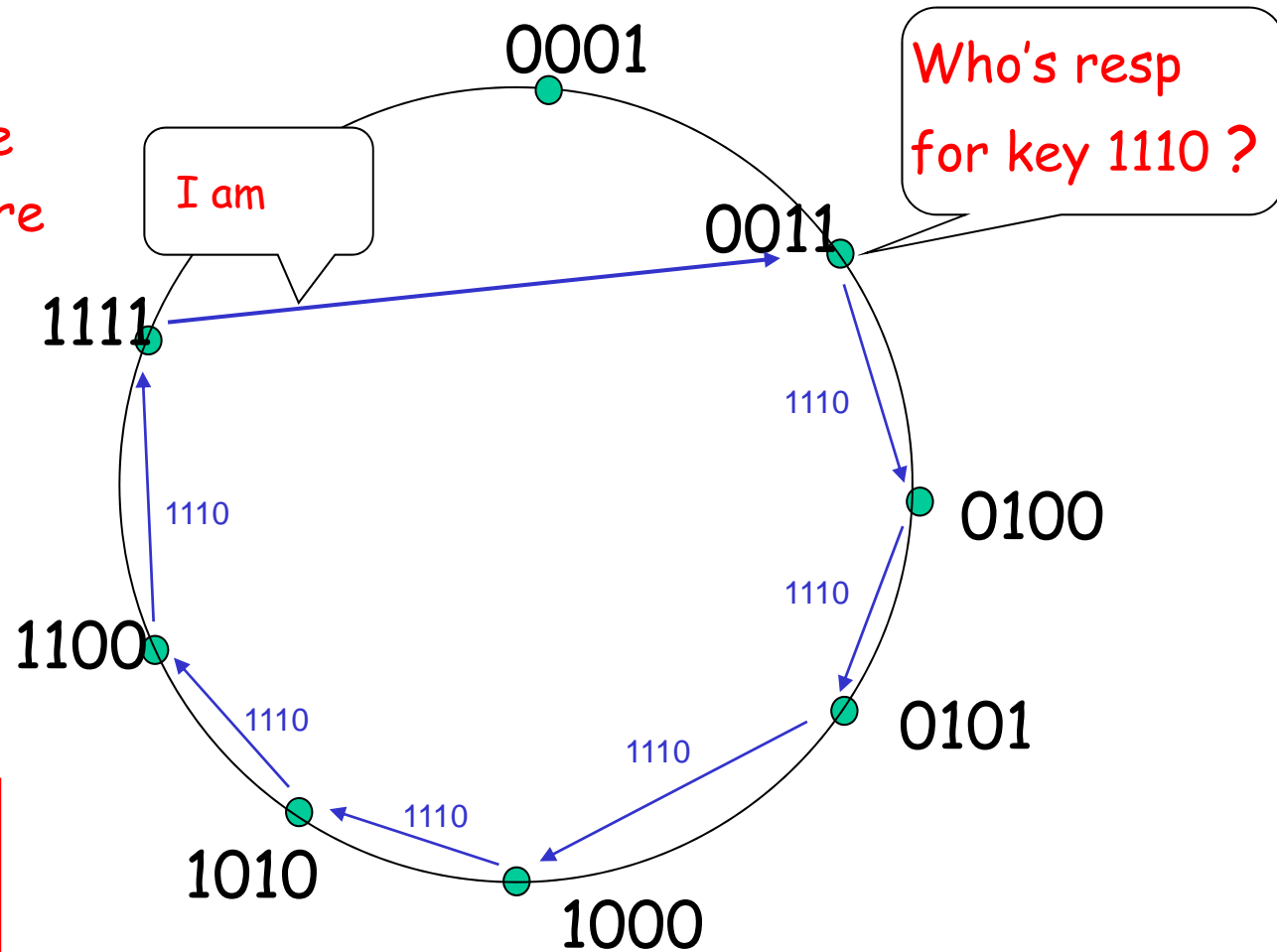


- ❑ Each peer *only* aware of immediate successor and predecessor.
- ❑ "Overlay network"



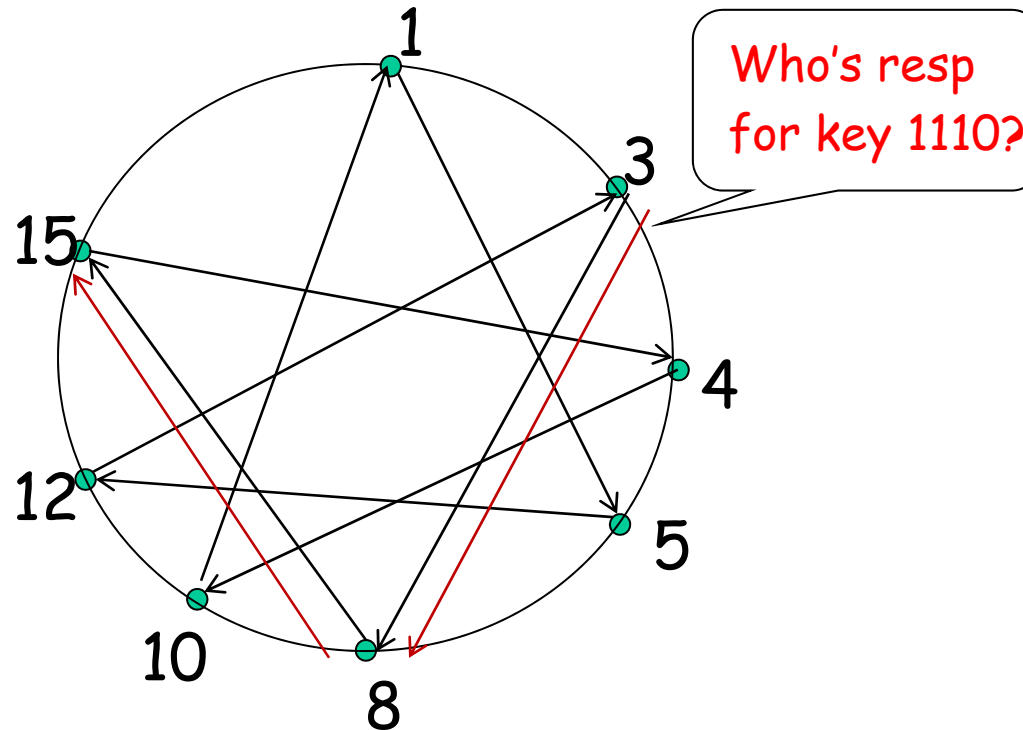
## Circle DHT (2)

$O(N)$  messages  
on avg to resolve  
query, when there  
are  $N$  peers



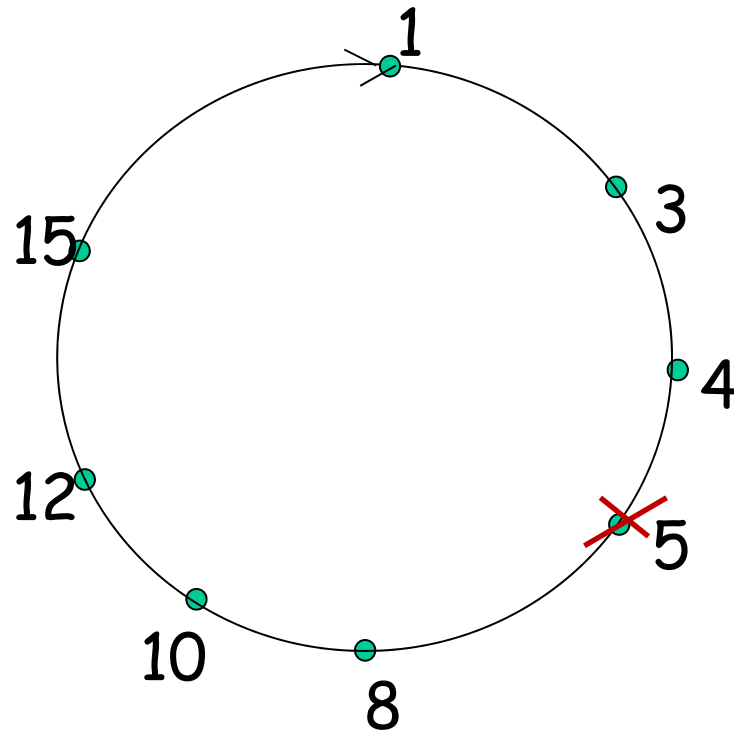
Define closest  
as closest  
successor

# Circular DHT with Shortcuts



- ❑ Each peer keeps track of IP addresses of predecessor, successor, short cuts.
- ❑ Reduced from 6 to 2 messages.
- ❑ Possible to design shortcuts so  $O(\log N)$  neighbors,  $O(\log N)$  messages in query

# Peer Churn

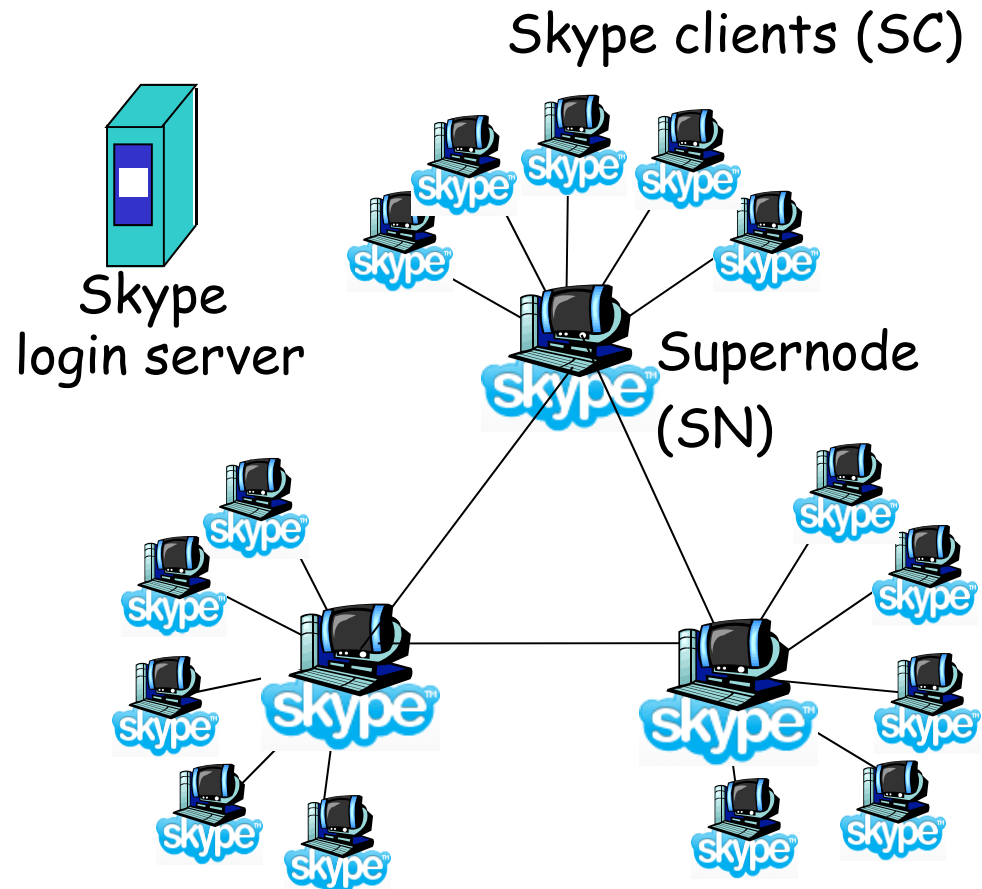


- To handle peer churn, require each peer to know the IP address of its two successors.
- Each peer periodically pings its two successors to see if they are still alive.

- ❑ Peer 5 abruptly leaves
- ❑ Peer 4 detects; makes 8 its immediate successor; asks 8 who its immediate successor is; makes 8's immediate successor its second successor.
- ❑ What if peer 13 wants to join?

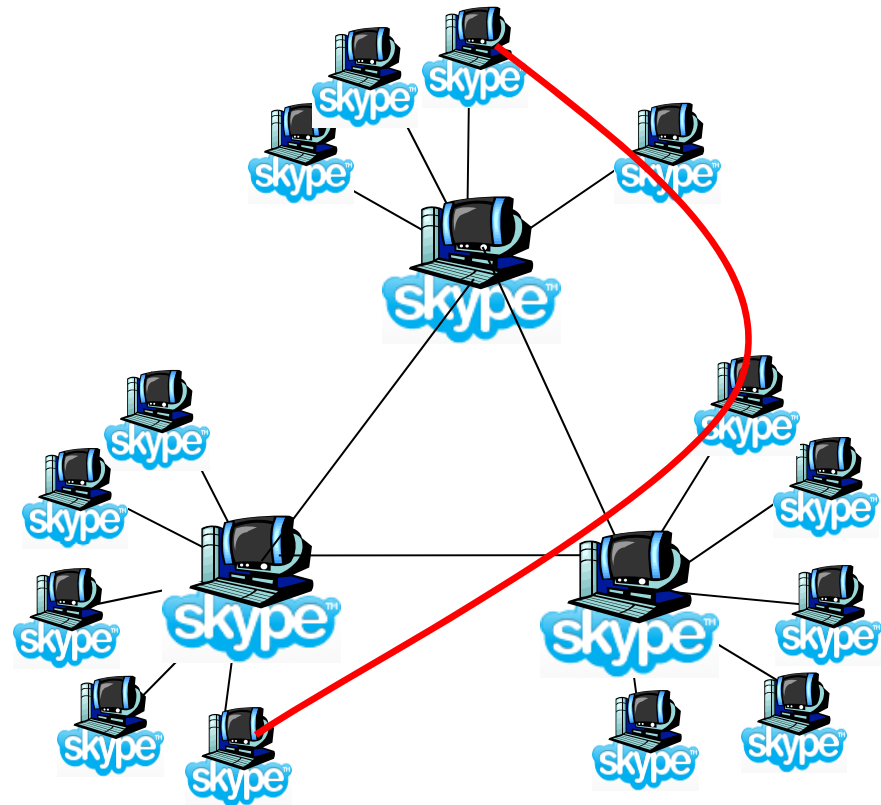
# P2P Case study: Skype

- ❑ inherently P2P: pairs of users communicate.
- ❑ proprietary application-layer protocol (inferred via reverse engineering)
- ❑ hierarchical overlay with SNs
- ❑ Index maps usernames to IP addresses; distributed over SNs



# Peers as relays

- ❑ Problem when both Alice and Bob are behind "NATs".
  - ❖ NAT prevents an outside peer from initiating a call to insider peer
- ❑ Solution:
  - ❖ Using Alice's and Bob's SNs, Relay is chosen
  - ❖ Each peer initiates session with relay.
  - ❖ Peers can now communicate through NATs via relay



# Chapter 2: Application layer

- ❑ 2.1 Principles of network applications
- ❑ 2.2 Web and HTTP
- ❑ 2.3 FTP
- ❑ 2.4 Electronic Mail
  - ❖ SMTP, POP3, IMAP
- ❑ 2.5 DNS
- ❑ 2.6 P2P applications
- ❑ 2.7 Socket programming with TCP
- ❑ 2.8 Socket programming with UDP

# Socket programming

Goal: learn how to build client/server application that communicate using sockets

## Socket API

- ❑ introduced in BSD4.1 UNIX, 1981
- ❑ explicitly created, used, released by apps
- ❑ client/server paradigm
- ❑ two types of transport service via socket API:
  - ❖ unreliable datagram
  - ❖ reliable, byte stream-oriented

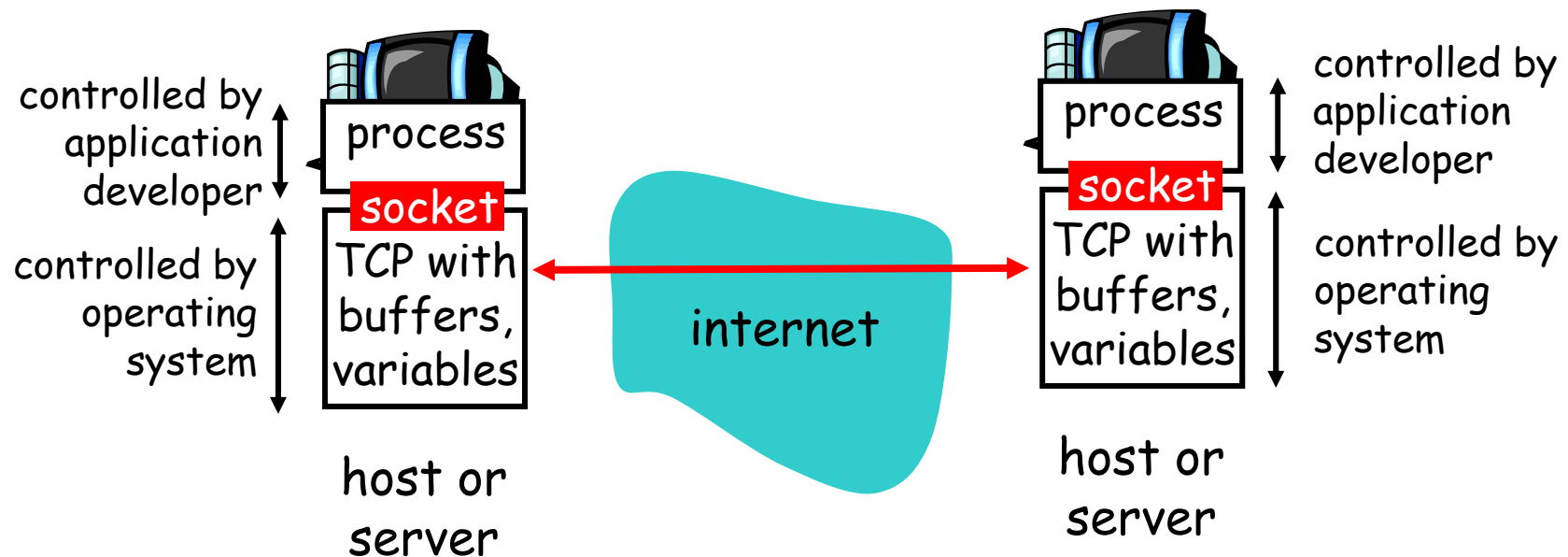
## socket

a *host-local, application-created, OS-controlled* interface (a "door") into which application process can *both send and receive* messages to/from another application process

# Socket-programming using TCP

Socket: a door between application process and end-end-transport protocol (UCP or TCP)

TCP service: reliable transfer of **bytes** from one process to another





# Socket programming *with TCP*

## Client must contact server

- ❑ server process must first be running
- ❑ server must have created socket (door) that welcomes client's contact

## Client contacts server by:

- ❑ creating client-local TCP socket
- ❑ specifying IP address, port number of server process
- ❑ When **client creates socket**: client TCP establishes connection to server TCP

- ❑ When contacted by client, **server TCP creates new socket** for server process to communicate with client
  - ❖ allows server to talk with multiple clients
  - ❖ source port numbers used to distinguish clients (*more in Chap 3*)

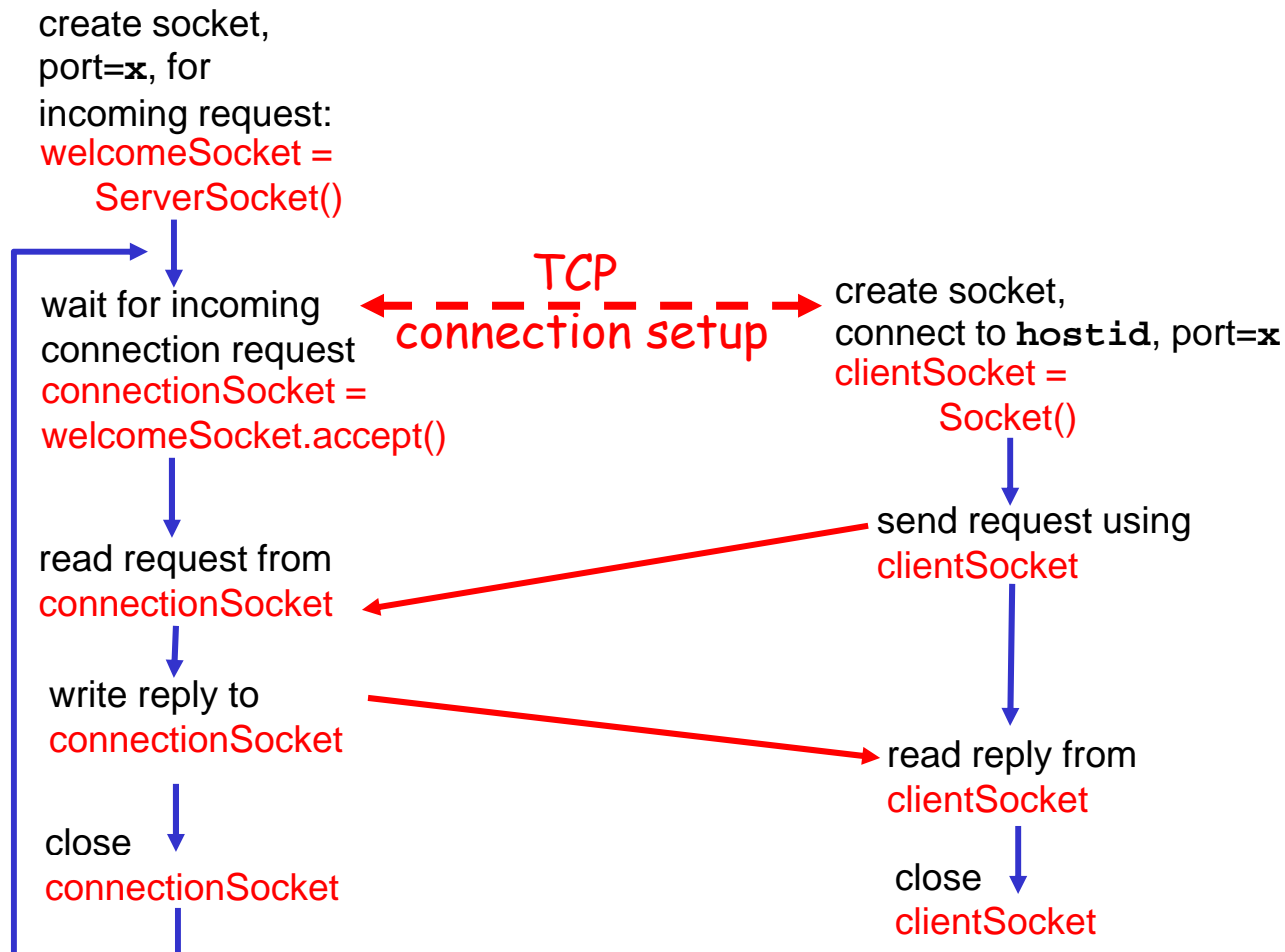
## **application viewpoint**

*TCP provides reliable, in-order transfer of bytes ("pipe") between client and server*

# Client/server socket interaction: TCP

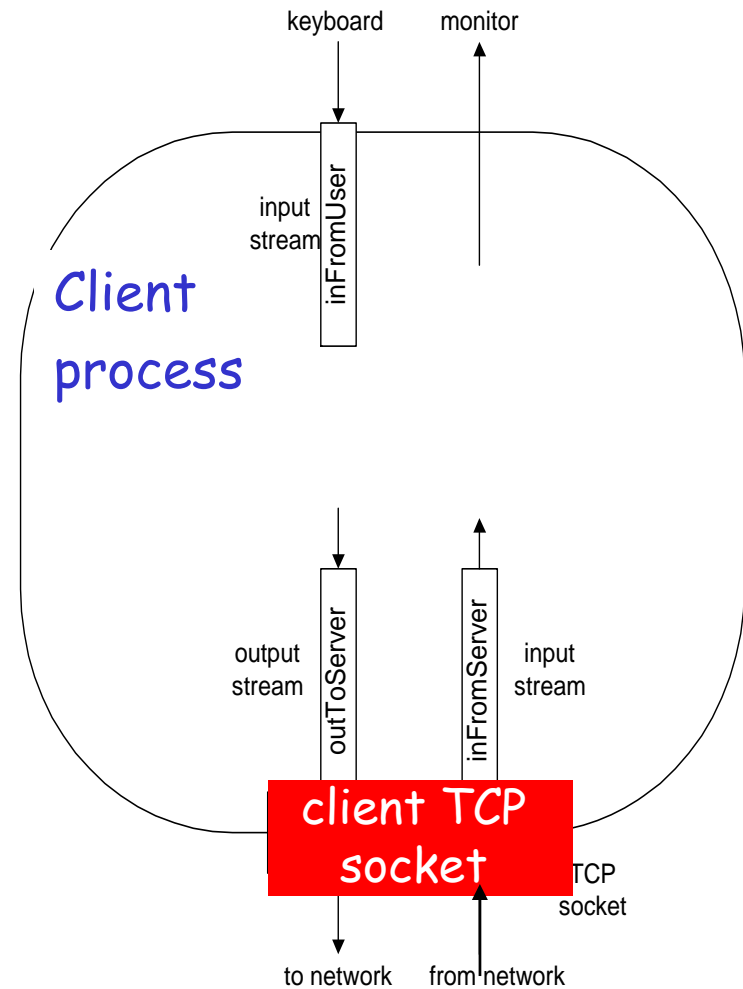
Server (running on `hostid`)

Client



# Stream jargon

- A **stream** is a sequence of characters that flow into or out of a process.
- An **input stream** is attached to some input source for the process, e.g., keyboard or socket.
- An **output stream** is attached to an output source, e.g., monitor or socket.



# Socket programming with TCP

## Example client-server app:

- 1) client reads line from standard input (`inFromUser` stream) , sends to server via socket (`outToServer` stream)
- 2) server reads line from socket
- 3) server converts line to uppercase, sends back to client
- 4) client reads, prints modified line from socket (`inFromServer` stream)

# Example: Java client (TCP)

```
import java.io.*;  
import java.net.*;  
class TCPCClient {
```

```
    public static void main(String argv[]) throws Exception  
    {
```

```
        String sentence;  
        String modifiedSentence;
```

Create  
input stream



```
        BufferedReader inFromUser =  
            new BufferedReader(new InputStreamReader(System.in));
```

Create  
client socket,  
connect to server



```
        Socket clientSocket = new Socket("hostname", 6789);
```

Create  
output stream  
attached to socket



```
        DataOutputStream outToServer =  
            new DataOutputStream(clientSocket.getOutputStream());
```

## Example: Java client (TCP), cont.

Create  
input stream  
attached to socket

→

```
BufferedReader inFromServer =  
    new BufferedReader(new  
        InputStreamReader(clientSocket.getInputStream()));  
  
sentence = inFromUser.readLine();  
  
Send line  
to server

→



```
outToServer.writeBytes(sentence + '\n');  
  
Read line  
from server

→



```
modifiedSentence = inFromServer.readLine();  
  
System.out.println("FROM SERVER: " + modifiedSentence);  
  
clientSocket.close();  
  
}  
}
```


```


```

# Example: Java server (TCP)

```
import java.io.*;  
import java.net.*;
```

```
class TCPServer {
```

```
    public static void main(String argv[]) throws Exception  
    {
```

```
        String clientSentence;  
        String capitalizedSentence;
```

Create  
welcoming socket  
at port 6789

```
        ServerSocket welcomeSocket = new ServerSocket(6789);
```

Wait, on welcoming  
socket for contact  
by client

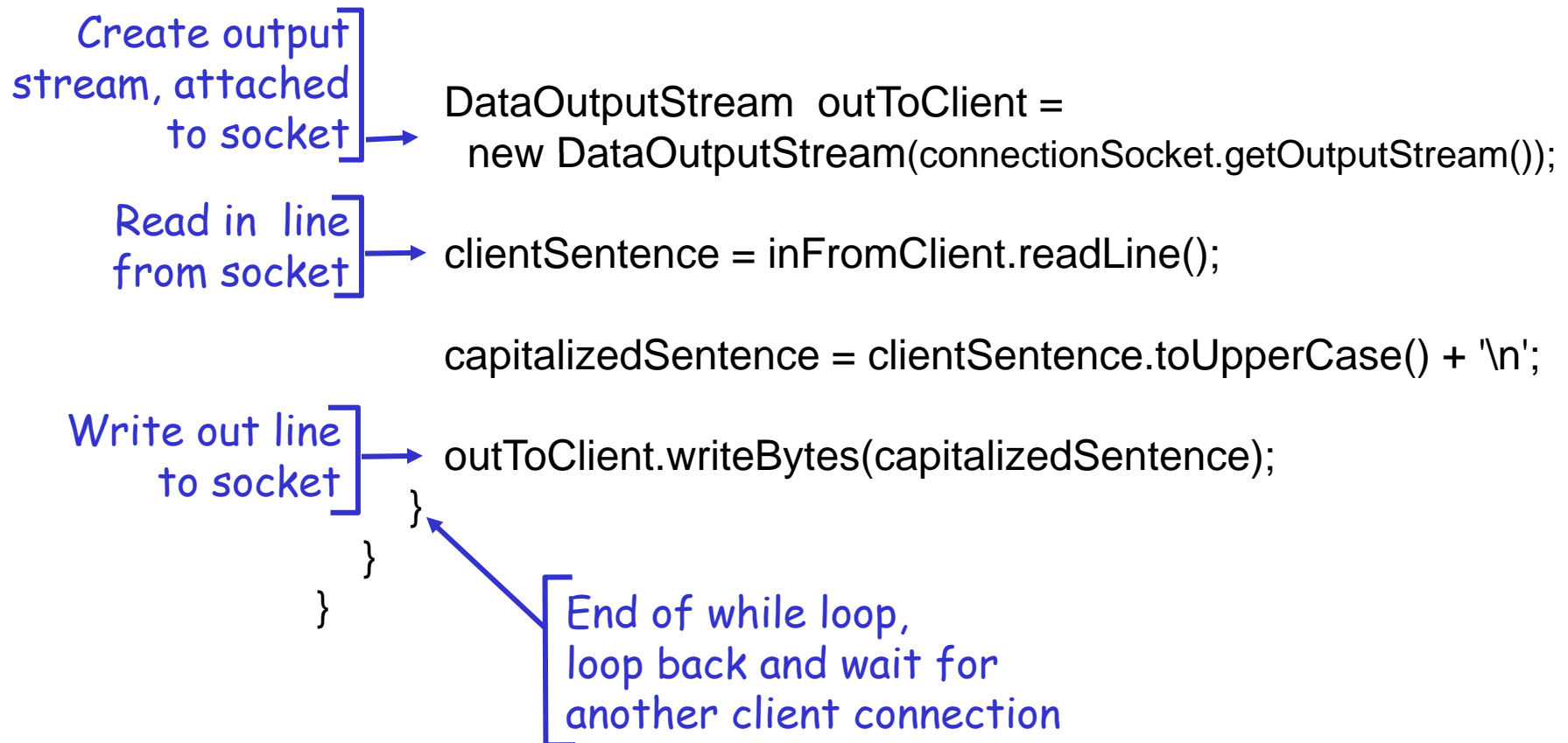
```
        while(true) {
```

```
            Socket connectionSocket = welcomeSocket.accept();
```

Create input  
stream, attached  
to socket

```
            BufferedReader inFromClient =  
                new BufferedReader(new  
                    InputStreamReader(connectionSocket.getInputStream()));
```

# Example: Java server (TCP), cont





# Chapter 2: Application layer

- ❑ 2.1 Principles of network applications
- ❑ 2.2 Web and HTTP
- ❑ 2.3 FTP
- ❑ 2.4 Electronic Mail
  - ❖ SMTP, POP3, IMAP
- ❑ 2.5 DNS
- ❑ 2.6 P2P applications
- ❑ 2.7 Socket programming with TCP
- ❑ 2.8 Socket programming with UDP

# Socket programming *with UDP*

UDP: no "connection" between client and server

- ❑ no handshaking
- ❑ sender explicitly attaches IP address and port of destination to each packet
- ❑ server must extract IP address, port of sender from received packet

UDP: transmitted data may be received out of order, or lost

application viewpoint

*UDP provides unreliable transfer of groups of bytes ("datagrams") between client and server*

# Client/server socket interaction: UDP

Server (running on `hostid`)

Client

create socket,  
port= x.  
`serverSocket =`  
`DatagramSocket()`

read datagram from  
`serverSocket`

write reply to  
`serverSocket`  
specifying  
client address,  
port number

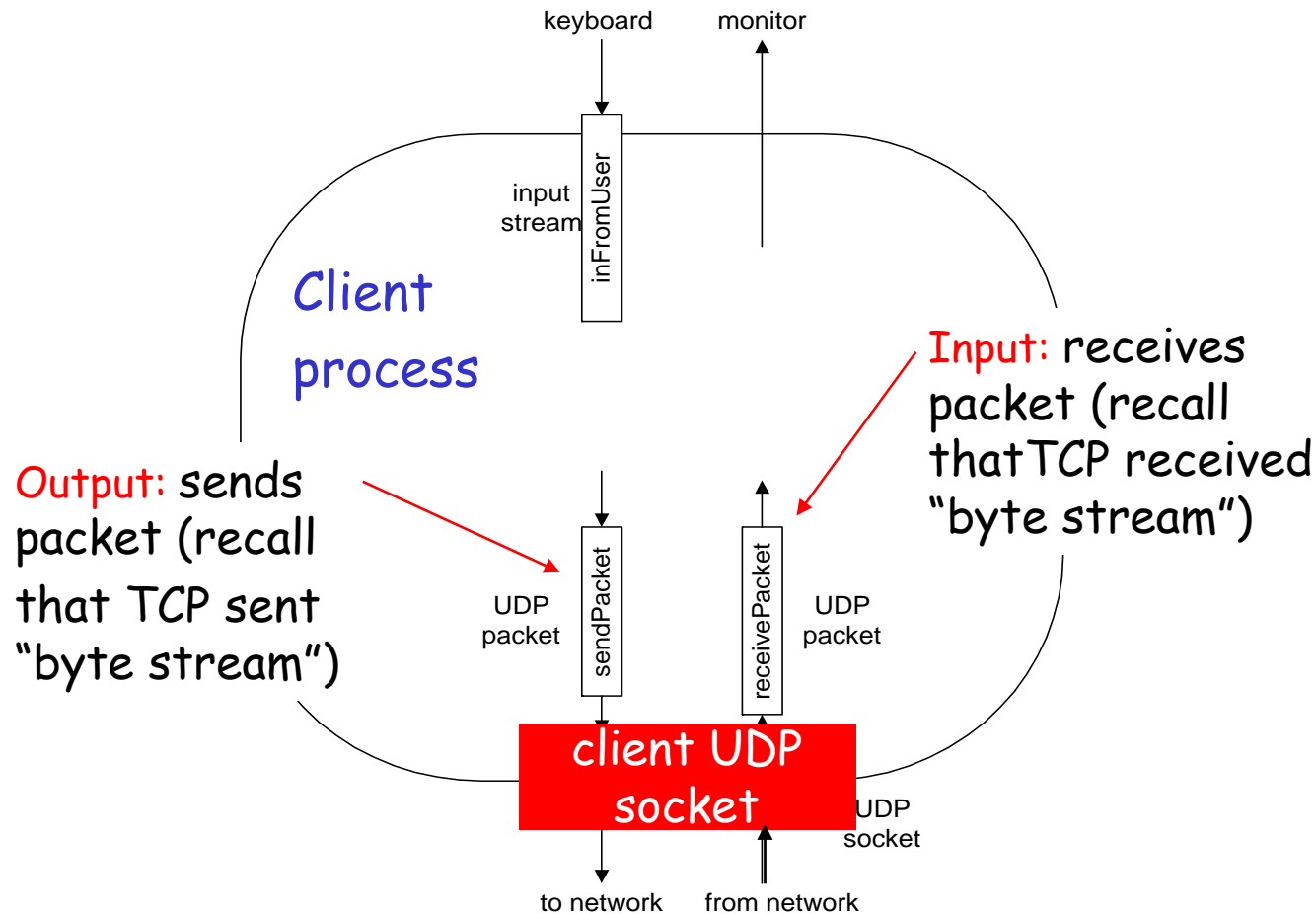
create socket,  
`clientSocket =`  
`DatagramSocket()`

Create datagram with server IP and  
port=x; send datagram via  
`clientSocket`

read datagram from  
`clientSocket`

close  
`clientSocket`

# Example: Java client (UDP)



# Example: Java client (UDP)

```
import java.io.*;
import java.net.*;
```

```
class UDPClient {
    public static void main(String args[]) throws Exception
    {
```

Create  
input stream

```
        BufferedReader inFromUser =
            new BufferedReader(new InputStreamReader(System.in));
```

Create  
client socket

```
        DatagramSocket clientSocket = new DatagramSocket();
```

Translate  
hostname to IP  
address using DNS

```
        InetAddress IPAddress = InetAddress.getByName("hostname");
```

```
        byte[] sendData = new byte[1024];
        byte[] receiveData = new byte[1024];
```

```
        String sentence = inFromUser.readLine();
        sendData = sentence.getBytes();
```

# Example: Java client (UDP), cont.

Create datagram  
with data-to-send,  
length, IP addr, port

Send datagram  
to server

Read datagram  
from server

```
DatagramPacket sendPacket =  
    new DatagramPacket(sendData, sendData.length, IPAddress, 9876);  
  
clientSocket.send(sendPacket);  
  
DatagramPacket receivePacket =  
    new DatagramPacket(receiveData, receiveData.length);  
  
clientSocket.receive(receivePacket);  
  
String modifiedSentence =  
    new String(receivePacket.getData());  
  
System.out.println("FROM SERVER:" + modifiedSentence);  
clientSocket.close();  
}  
}
```

# Example: Java server (UDP)

```
import java.io.*;  
import java.net.*;
```

```
class UDPServer {  
    public static void main(String args[]) throws Exception  
    {
```

Create  
datagram socket  
at port 9876

```
        DatagramSocket serverSocket = new DatagramSocket(9876);
```

```
        byte[] receiveData = new byte[1024];  
        byte[] sendData = new byte[1024];
```

```
        while(true)  
        {
```

Create space for  
received datagram

```
            DatagramPacket receivePacket =  
                new DatagramPacket(receiveData, receiveData.length);
```

Receive  
datagram

```
            serverSocket.receive(receivePacket);
```

# Example: Java server (UDP), cont

```
String sentence = new String(receivePacket.getData());
```

Get IP addr  
port #, of  
sender

```
→ InetAddress IPAddress = receivePacket.getAddress();
```

```
→ int port = receivePacket.getPort();
```

```
String capitalizedSentence = sentence.toUpperCase();
```

```
sendData = capitalizedSentence.getBytes();
```

Create datagram  
to send to client

```
→ DatagramPacket sendPacket =  
  new DatagramPacket(sendData, sendData.length, IPAddress,  
    port);
```

Write out  
datagram  
to socket

```
→ serverSocket.send(sendPacket);
```

```
}  
}  
}
```

End of while loop,  
loop back and wait for  
another datagram



# Chapter 2: Summary

our study of network apps now complete!

- application architectures

- ❖ client-server
- ❖ P2P
- ❖ hybrid

- application service requirements:

- ❖ reliability, bandwidth, delay

- Internet transport service model

- ❖ connection-oriented, reliable: TCP
- ❖ unreliable, datagrams: UDP

- specific protocols:

- ❖ HTTP
- ❖ FTP
- ❖ SMTP, POP, IMAP
- ❖ DNS
- ❖ P2P: BitTorrent, Skype

- socket programming

# Chapter 2: Summary

Most importantly: learned about *protocols*

□ typical request/reply message exchange:

- ❖ client requests info or service
- ❖ server responds with data, status code

□ message formats:

- ❖ headers: fields giving info about data
- ❖ data: info being communicated

*Important themes:*

- control vs. data msgs
  - ❖ in-band, out-of-band
- centralized vs. decentralized
- stateless vs. stateful
- reliable vs. unreliable msg transfer
- "complexity at network edge"